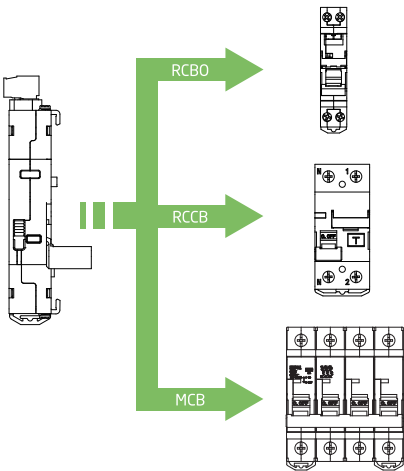


# MT53 Wifi

## Remote Control/Auto-reclosing Series Product Manual



- R** Remote Control
- A** Auto Reclose
- W** Tuya App WiFi Control



Suitable circuit breakers for MT53 WiFi remote control/auto-reclosing devices:

CB Style	Poles	MCB				RCD				RCBO			
		1P	2p	3P/4P	2P	4P	1P	2P	3P	3P+N	4P		
MT53A(R)W	10□-1△	✓	✓		✓	✓	✓	✓					
MT53A(R)W	10□-11△	✓						✓					
MT53A(R)W	10□-12△		✓						✓				
MT53A(R)W	10□-2△			✓						✓	✓	✓	✓

Note: ■ □ △ in the above table are all explained in the MT53 WiFi remote control/auto-reclosing model description. Please see the model description for details.

### Product Model Description

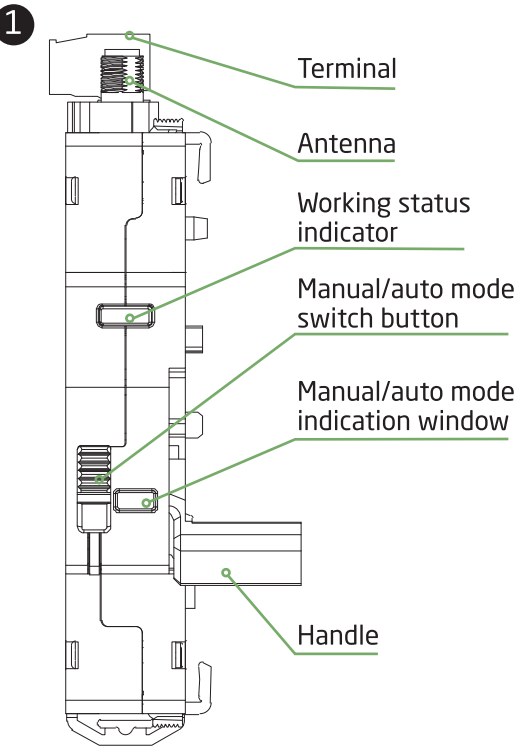
For example: MT53AWN-1N

- M** → Company
- T** → Control, automatic reclosing device
- 53** → Design serial number
- A** → A: Auto Reclose R: Remote control
- W** → WiFi control
- N** → W: Matis 50 series  
J: Matis 60 series  
H: Matis 22 series  
K: Matis 90 series  
N: Schneider Acti 9 series MCB/RCBO  
I: Schneider Acti 9 Series RCD iLD  
L: Nader NDB2 MCB/RCCB  
Z: Chint NB1 MCB  
C: Chint NL1 RCCB
- 1** → 11 : 18mm handle only to 1P circuit breaker  
12 : 18mm handle only to 2P circuit breaker  
1 : 18mm handle to 1P/2P circuit breaker  
2 : 36mm handle to 3P/4P circuit breaker
- N** → N: AC220V

### Electrical Characteristics

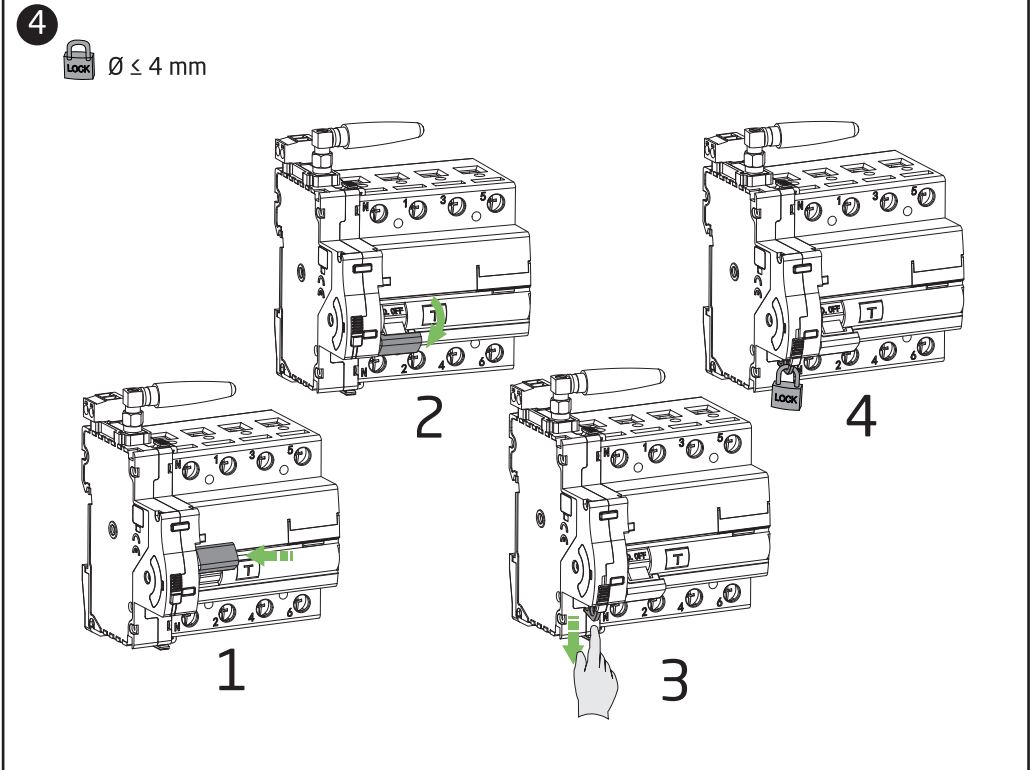
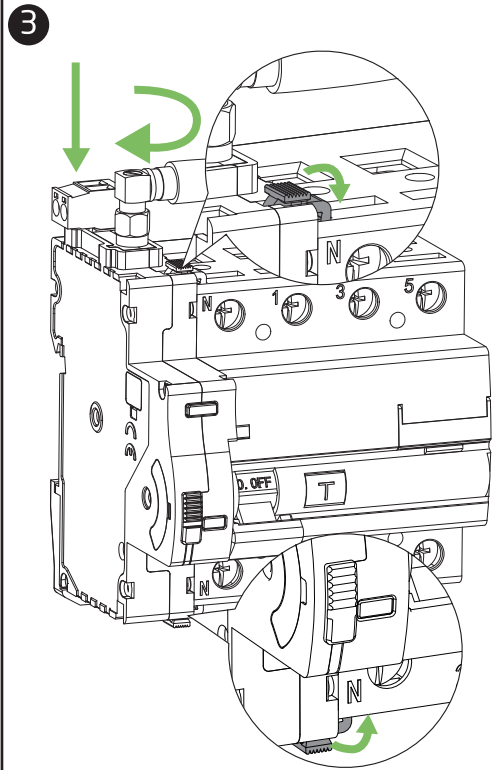
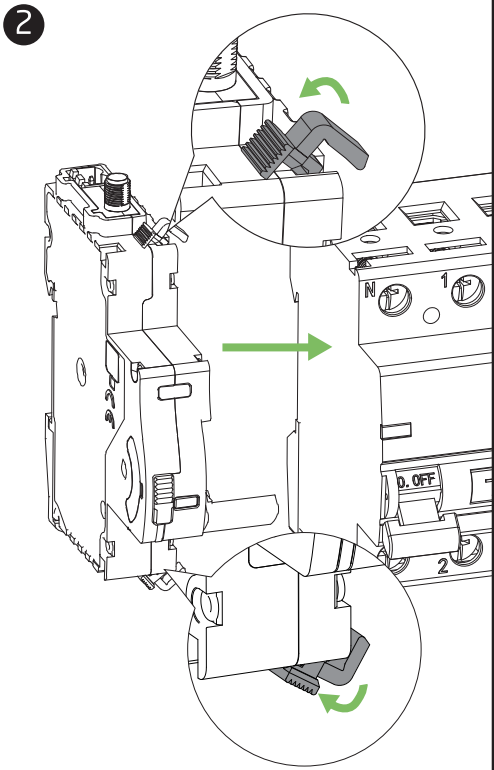
Standard	YDT 2346-2011 communication auto-reclosing residual current protector technology
Power Distribution System	TN - S
Rated Voltage (Ue)	AC~220V
Minimum Voltage (minimum UE)	85% Ue
Maximum Voltage (maximum UE)	110% Ue
Rated Insulation Voltage (Ui)	500V
Inter-polar Dielectric Strength Test Voltage	2500V AC for 1 minute
Rated Impulse Withstand Voltage (Uimp)	4kV
Overvoltage Type	III
Rated Frequency	50Hz
Static Power	1VA
Remote Control Time Power	20VA
Leakage Making/Breaking Capability (IΔm)	IΔm of related circuit breakers
Rated Condition Residual Short Circuit Current (IΔc)	IΔc of related circuit breakers
Length of Handle	1 - 2

MCB Type	1P - 2P - 3P - 4P	Working Voltage	5V-230V AC/DC
RCCB Type	AC - A - A[IR] - A[S]	Working Current	0.6A (min) -1 (max)
Rated Current (In)	In of related circuit breakers	Working Frequency	50Hz
Rated Residual Operated current (IΔn)	IΔn of related circuit breakers	Use Category	5V-230V AC/DC
<b>Mechanical Characteristics</b>		Operating Mode	0.6A (min) -1 (max)
		Wiring Capability	50Hz
		Rated Tightening Torque	AC12
Width in the DIN Module		<b>Communication Parameters</b>	
		Baud Rate	9600 by default (can be set)
Maximum Operating Frequency	30open/h	Check Bit	No check
Maximum Mechanical Durability (Total Number of Operations)	10000	Data Bit	8
Protection Grade	IP20 (outside the cabinet) - IP40 (inside the cabinet)	Stop Bit	1
Circuit Breaker Terminal Section	Soft wire: ≤ 1x16mm <sup>2</sup> Hard wire: ≤ 1x25mm <sup>2</sup>	Device Address	Factory default address: 1
<b>Environmental Characteristics</b>		<b>Warranty</b> Anyone who purchases this model of device enjoys a 24-month warranty period from the date of purchase. During the warranty period, if the quality of the device itself affects the normal use, you can enjoy free repair and replacement, and the condition of paid service as follows: the improper use, drop, installation and wiring errors that cause irreversible damage. Besides, if you disassemble and modify the device yourself, you will not enjoy the warranty service.	
		Pollution Levels	2
		Operating Temperature	-25°C +60°C
		Storage Temperature	-40°C +70°C
Relative Humidity		55°C - RH 95%	

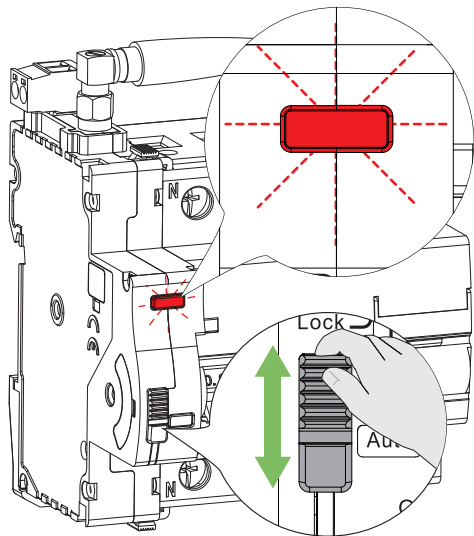


### Working Status Indicator

Green Light On	Close
Green Light Flash Slowly	WLAN transmits data normally (in WiFi distribution mode)
Red Light on	Open
Red Light Flash Slowly	Abnormal WLAN connection (in WiFi distribution mode)



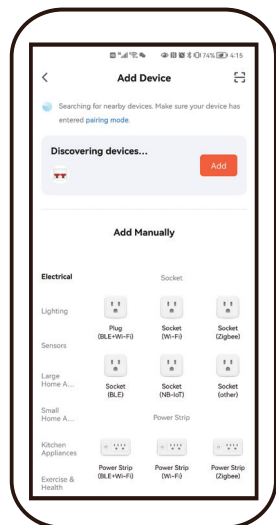
5



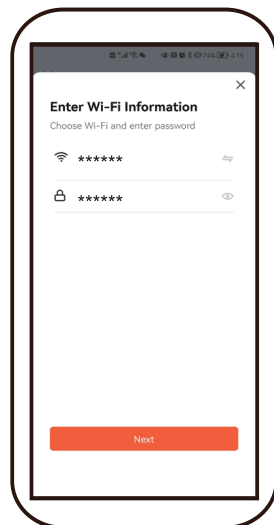
1. Switch the button from auto to manual then back to auto again, repeat the operation 2 times, the red light flashes and enter the distribution network mode.



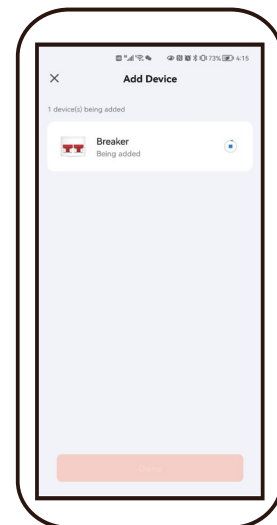
2. Open the Tuya WiFi APP.



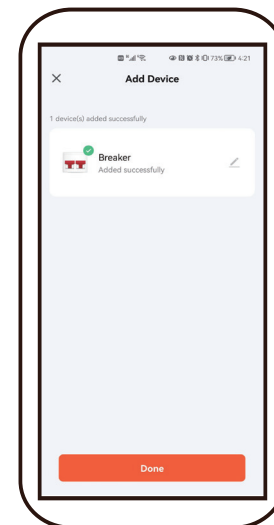
3. Click the Add button to add a device.



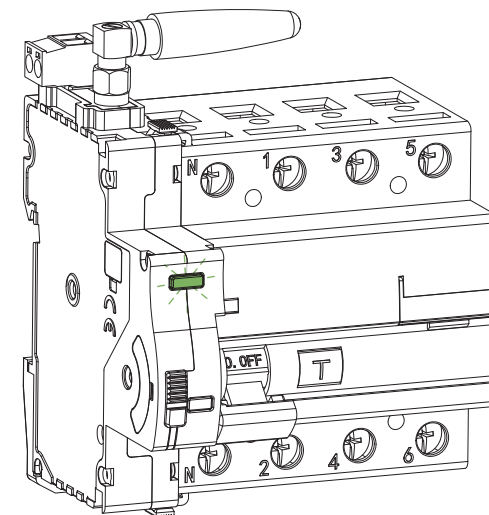
4. Enter WIFI information.



5. Wait for the device to be added.

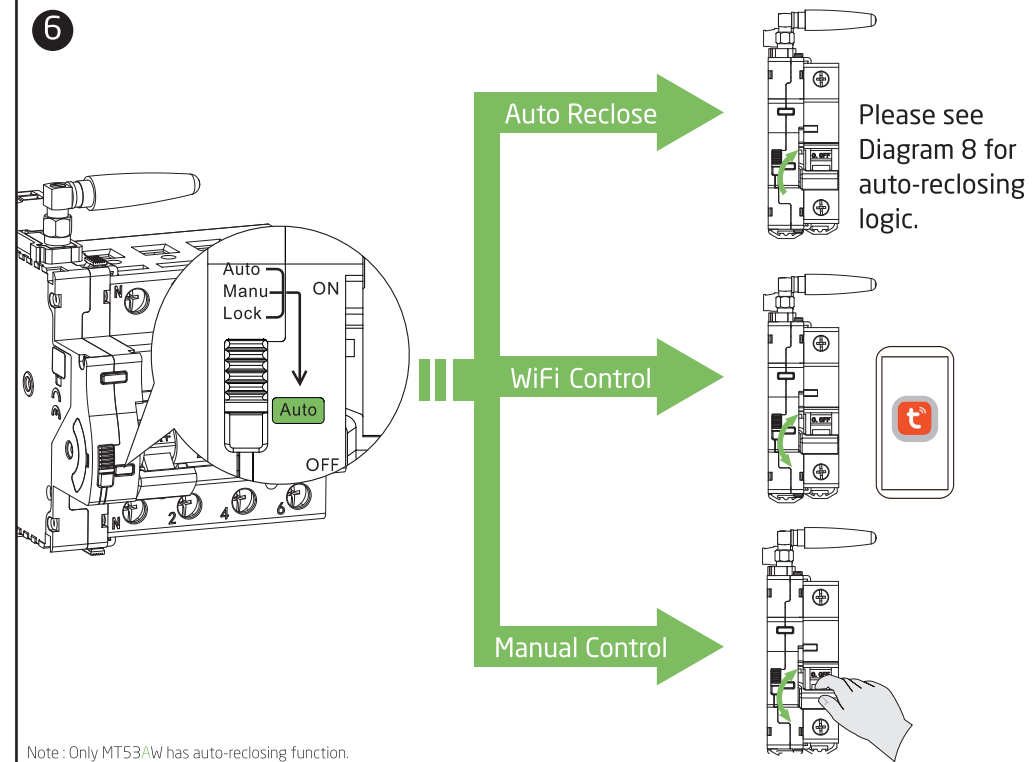


6. Add device successfully.

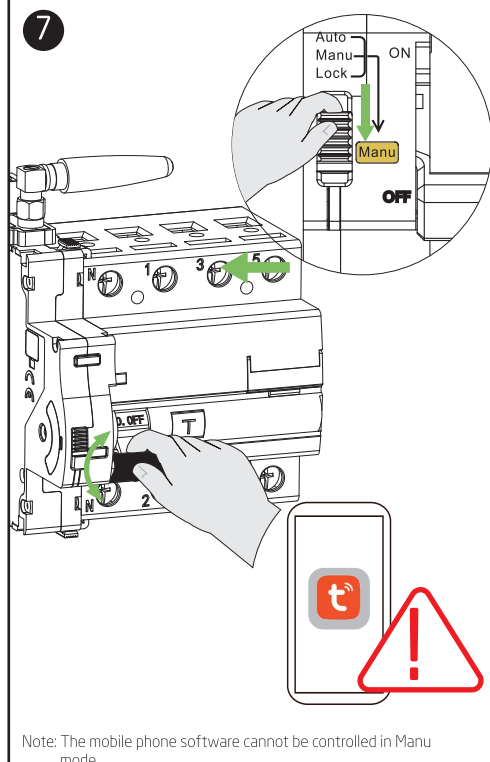


7. The green light flashes and the connection is successful. The device can be controlled by Tuya APP WiFi.

6



7



8

