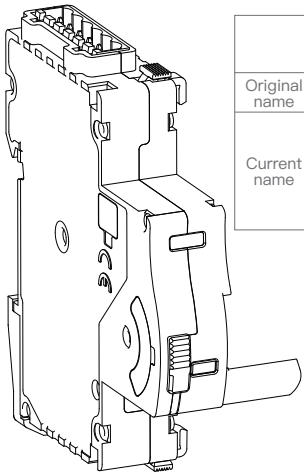
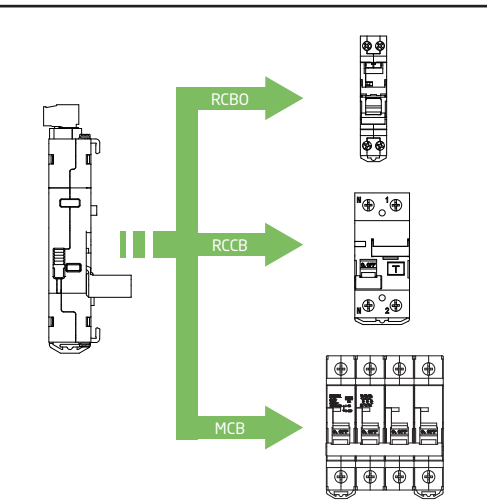


# MT53 IO

## Remote Control/Auto-reclosing Series Product Manual



	Auto-re-closing Series	Remote Control Series
Original name	MT53AI	MT53RI
Current name	MT53RA	
	MT53RAix	MT53Ri
	MT53RAix	MT53Rix



Suitable circuit breakers for  
MT53 IO remote control/auto-reclosing devices:


Style	Poles	MCB				RCD				RCBO			
		1P	2p	3P/4P	2P	4P	1P	2P	3P	3P+N	4P		
MT53A(R) 10C-1Δ		✓	✓		✓	✓	✓	✓					
MT53A(R) 10C-11Δ		✓						✓					
MT53A(R) 10C-12Δ			✓						✓				
MT53A(R) 10C-2Δ				✓						✓	✓	✓	✓

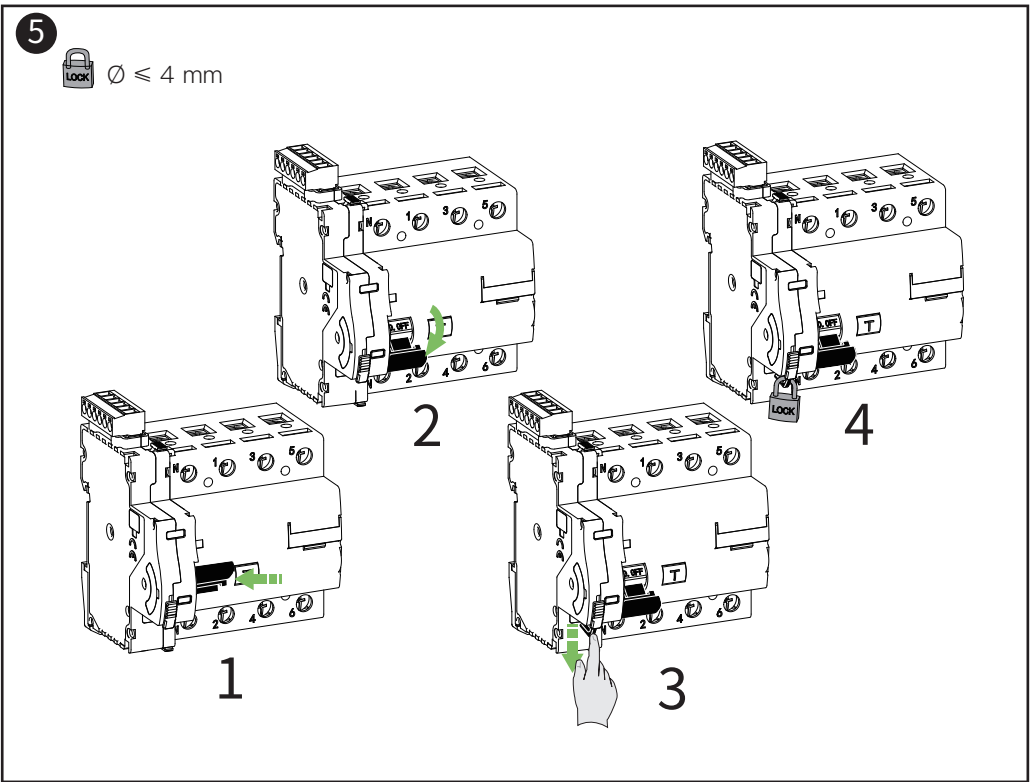
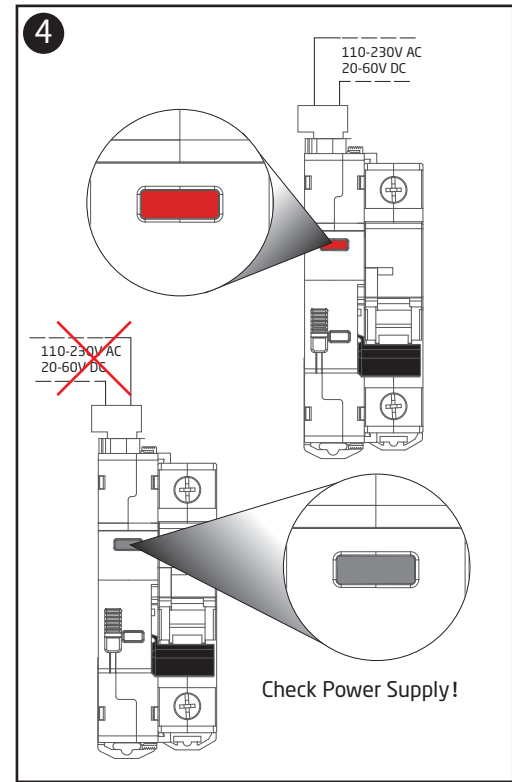
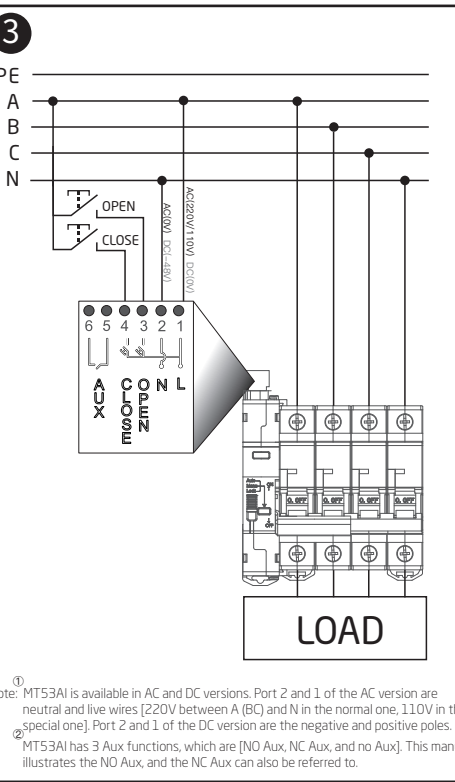
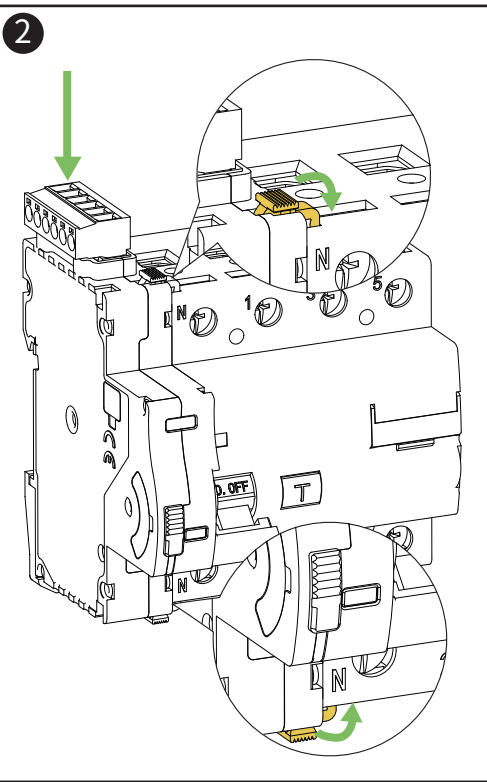
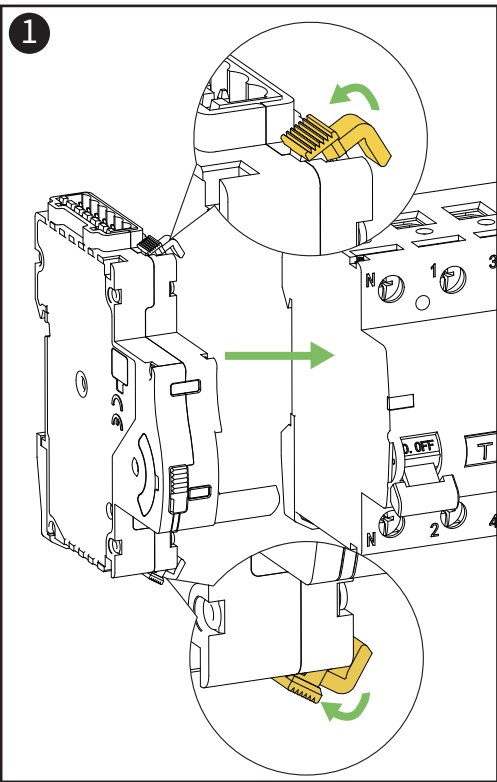
Note: ■ □ Δ in the above table are all explained in the MT53 IO remote control/ auto-reclosing model description. Please see the model description for details.

### Product Model Description

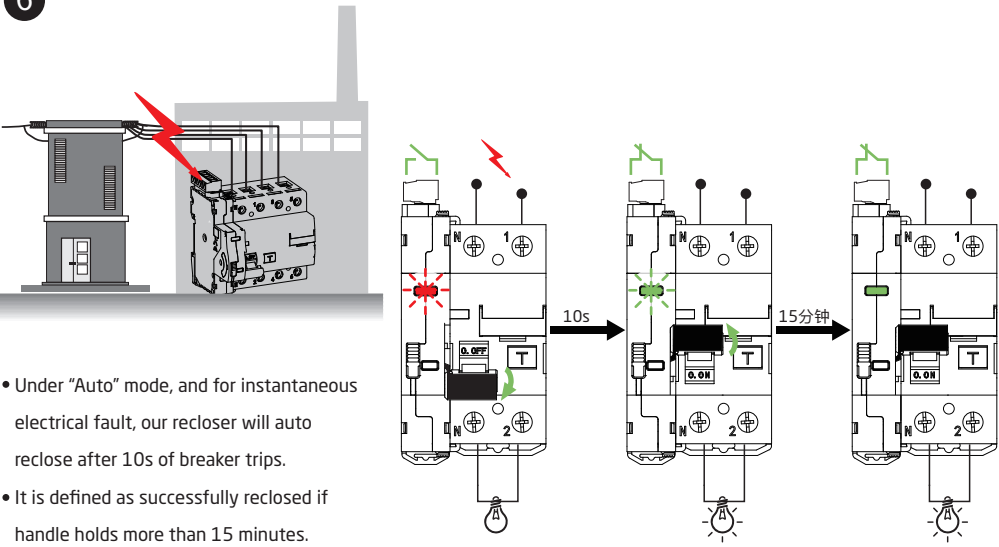
For example: MT53AIW10-1N

- M → Company
- T → Control, automatic reclosing device
- 53 → Design serial number
- A → A: Auto Reclose R: Remote control
- I → IO control
- 10 → 01: NC Aux  
01: NO Aux  
None: No Aux
- N → W: Matis 50 series  
J: Matis 60 series  
H: Matis 22 series  
K: Matis 90 series  
N: Schneider Acti 9 series MCB/RCCB  
I: Schneider Acti 9 Series RCD iLD  
L: Nader NDB2 MCB/RCCB  
Z: Chint NB1 MCB  
C: Chint NL1 RCCB
- 1 → 1: 18mm handle only to 1P circuit breaker  
2: 18mm handle only to 2P circuit breaker  
1: 18mm handle to 1P/2P circuit breaker  
2: 36mm handle to 3P/4P circuit breaker
- N → N: AC220V

Electrical Characteristics		The Width of DIN Module		1	Wiring Capability	≤2.5mm <sup>2</sup>	
Standard	EN 60947-5-1	Reclosing Time Interval	10s - 60s - 300s		Rated Tightening Torque	0.4Nm	
Power Distribution System	TN-S / TN-C-S / TT	Max Operation Frequency	30open./h		Min Rated Voltage(Min Ue)		
Rated Voltage(Ue)	230V AC (1)	Electrical Life	10000		Auto Reclose When Electric Fault Trip	●	
Min Rated Voltage(Min Ue)	85% Ue	Max. Auto Reclose Cycle	3		Earthleakage Test	●	
Max Rated Voltage(Max Ue)	110% Ue	Reclosed Counting Reset Time	60s		Reclose Stops when Fault	●	
Rated Insulation Voltage(Ui)	500V	Protection Grade	IP20 (Outside Panel) IP40 (Inside Panel)		Signal of Reclosing	●	
Diaelectric Strength	2500V AC for 1 minute	Terminal Part of Breaker	Soft Cable: ≤ 1x16mm <sup>2</sup> Hard Cable: ≤ 1x25mm <sup>2</sup>		Fault Signal Indicator	●	
Rated Withstand Voltage(Uimp)	4kV					Function of Auto / Manual	●
Over-voltage Category	III					<div> <b>Warranty</b> All users who purchase the product enjoy a 24-month warranty period from the date of purchase. During the warranty period, if there is a quality problem which affects normal use, you can enjoy free repair and replacement. In case of irreversible damage caused by improper use, drop, installation and wiring errors, it can be repaired or replaced at a fee within the warranty period. If you disassemble and modify it by yourself, you will not enjoy the warranty service.</div>	
Rated Frequency	50/60Hz						
Static Power	1VA	Enviroment Characteristics					
Power of Remote Operation	20VA	Pollution Grade	2				
Breaking Capacity of Earthleakage (IΔm)	The IΔm of Related Breaker	Work Temperature	-25°C +60°C				
		Storage Temperature	-40°C +70°C				
Rated Residual Short Circuit Current (IΔc)	The IΔc of Related Breaker	Relative Humidity	25°C / RH 95%				
		Auxiliary Contact Characteristics					
Handle Length	1 / 2	Contact	yes				
MCB Type	1P / 2P / 3P / 4P	Contact Type	Electronic Relay				
RCCB Type	AC / A / B	Rated Voltage	5V-230V AC/DC				
Rated Current(In)	The In of Related Breaker	Rated Current	0.01A (min) -0.4 (max)				
Rated Residual Current(IΔn)	The IΔn of Related Breaker	Frequency	50Hz				
AUX Input	0.4A(max)	Use Category	AC12				
Mechanical Characteristics		Operation Mode	NO/NC/COM Signal of Handle Position				



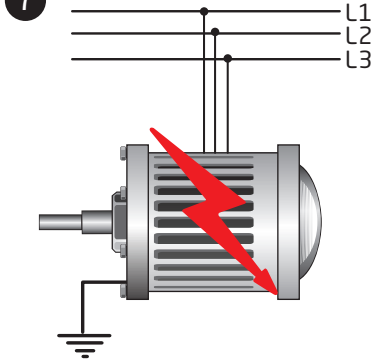
6



- Under “Auto” mode, and for instantaneous electrical fault, our recloser will auto reclose after 10s of breaker trips.
- It is defined as successfully reclosed if handle holds more than 15 minutes. After successfully reclosed, previous reclose counting will be cleared and renewed.

Note: MT53AI series has automatic reclosing function, MT53RI series does not have automatic reclosing function.

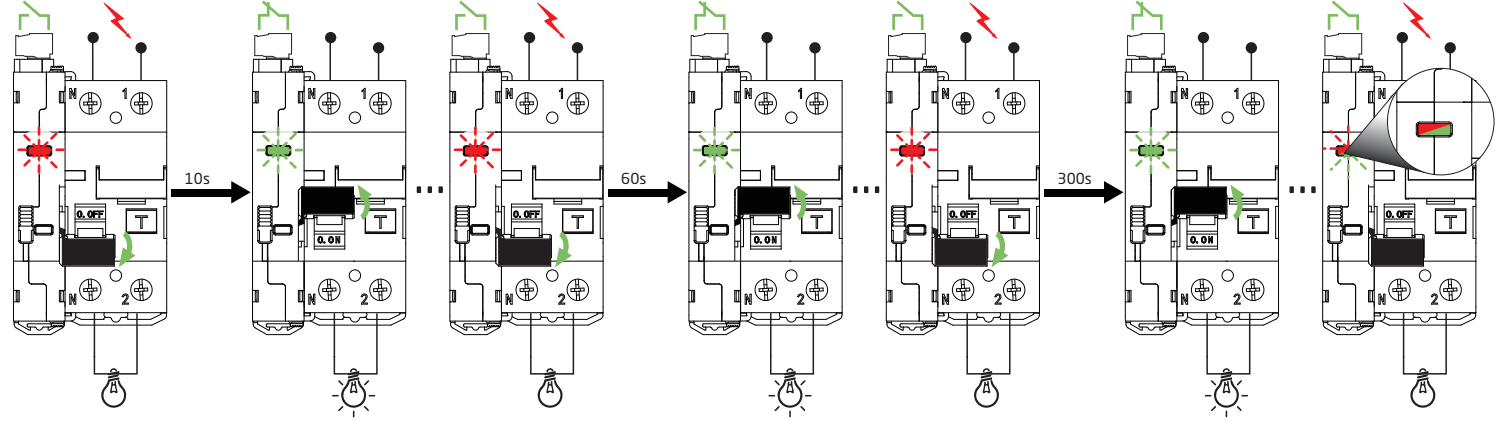
7



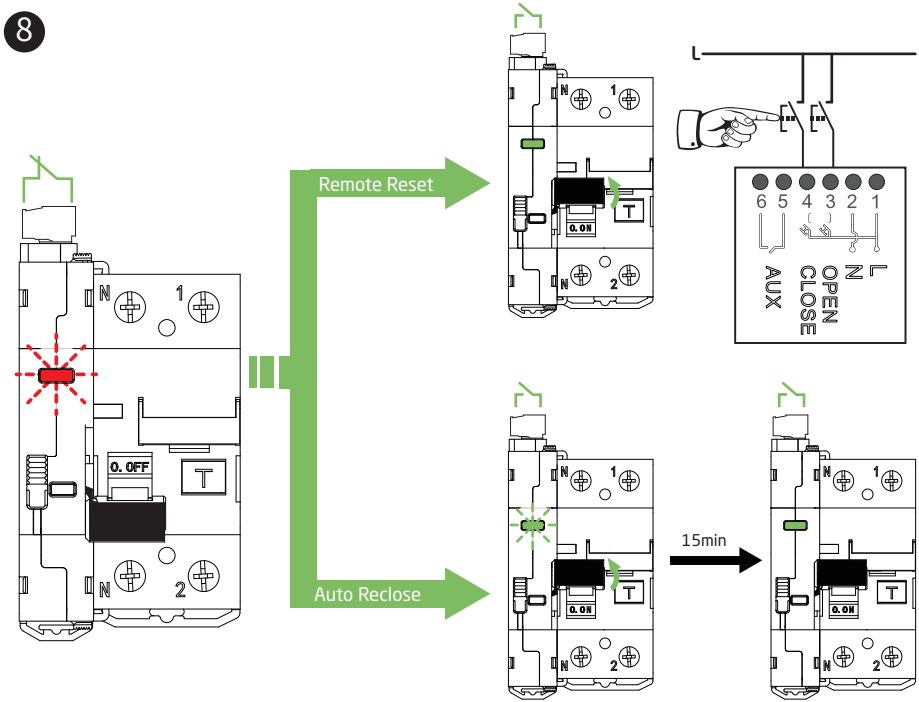
- Under “Auto” mode, and for continuous electrical fault,
- It will auto reclose after 10s time delay, and failed;
- It will auto reclose again after 60s time delay, and failed;
- It will auto reclose again after 300s time delay, and failed;
- It will switch to “Lock” status, and no more auto reclose (Meanwhile, the terminal of remote On/Off functions)

Note: MT53AI series has automatic reclosing function, MT53RI series does not have automatic reclosing function.

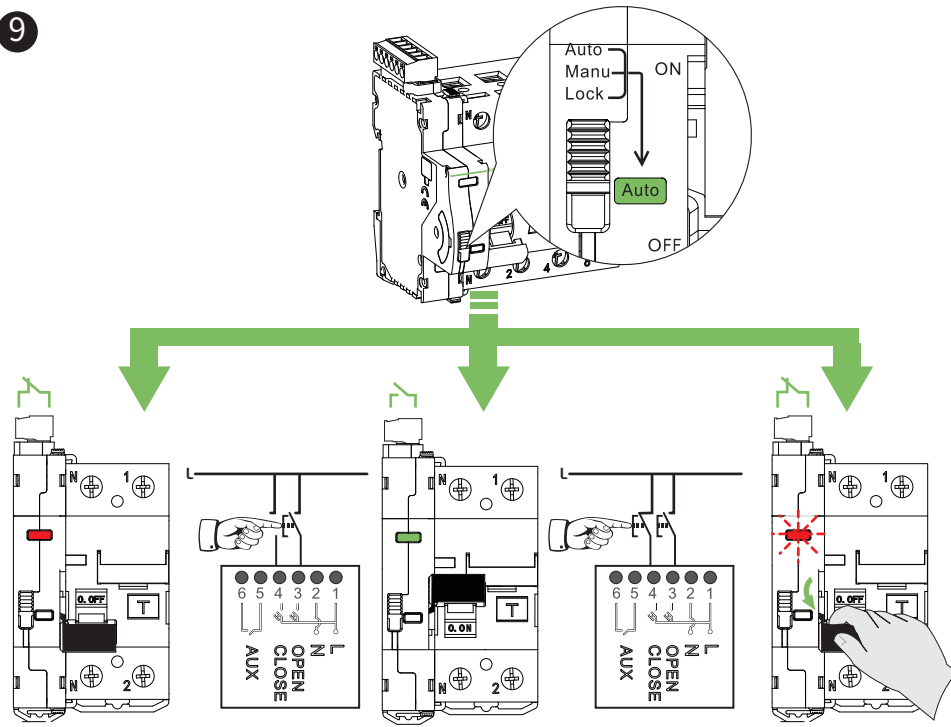
Working Status Indicator	
Closed	Green On
Open under Manual/Open under Auto	Red on
Reclosing after Fault Opening	Red Flashing
Stabilizing after Auto Reclosing	Green Flashing
Reclosing Failed after Three Automatic Reclosing	Red/Green Flashing Alternately
Adjust to Manual Mode	Red On



8

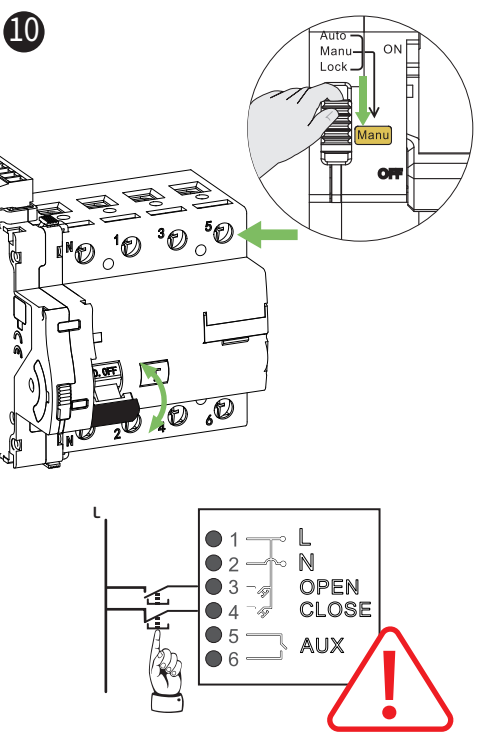


9



Note: It will enter reclose status when recloser is ON position and manually switched off.

10



Note: The dry contact is disabled when “Manu” mode.

