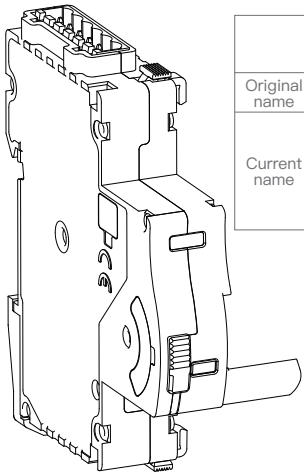
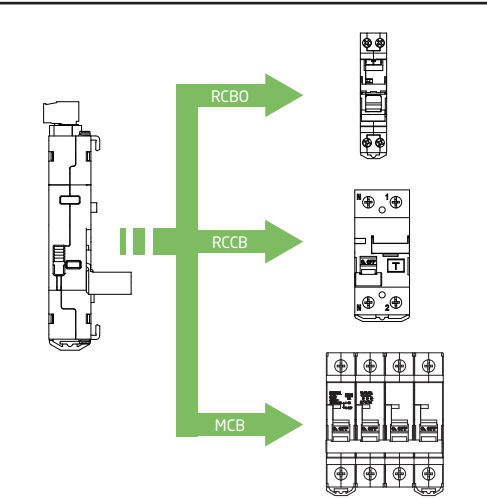


MT53 IO

Remote Control/Auto-reclosing Series Product Manual



	Auto-re-closing Series	Remote Control Series
Original name	MT53AI	MT53RI
Current name	MT53RA	
	MT53RAix	MT53Ri
	MT53RAix	MT53Rix



Suitable circuit breakers for
MT53 IO remote control/auto-reclosing devices:


Style	Poles	MCB				RCD				RCBO			
		1P	2p	3P/4P	2P	4P	1P	2P	3P	3P+N	4P		
MT53A(R) 10C-1Δ		✓	✓		✓	✓	✓	✓					
MT53A(R) 10C-11Δ		✓						✓					
MT53A(R) 10C-12Δ			✓						✓				
MT53A(R) 10C-2Δ				✓						✓	✓	✓	✓

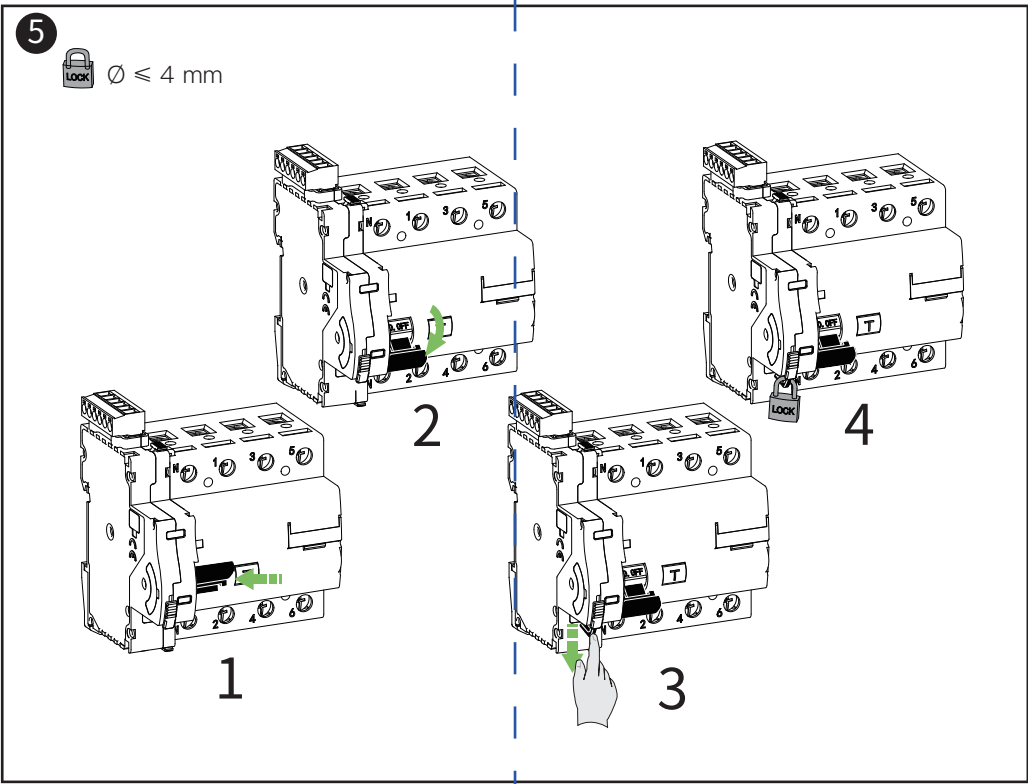
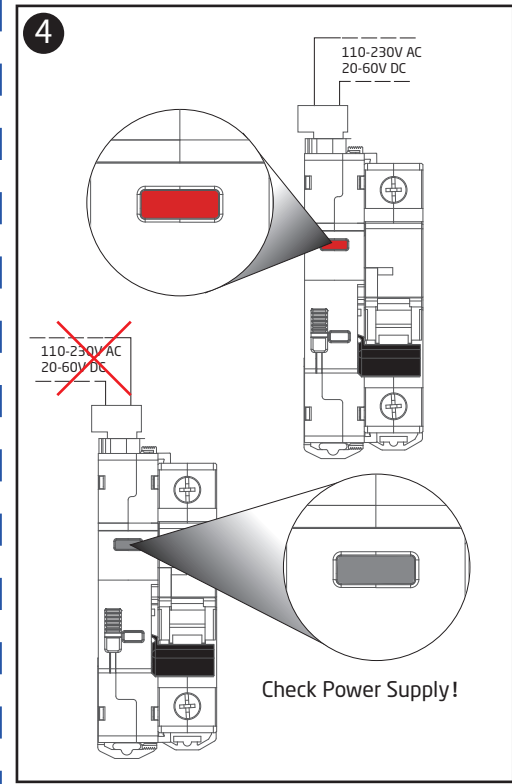
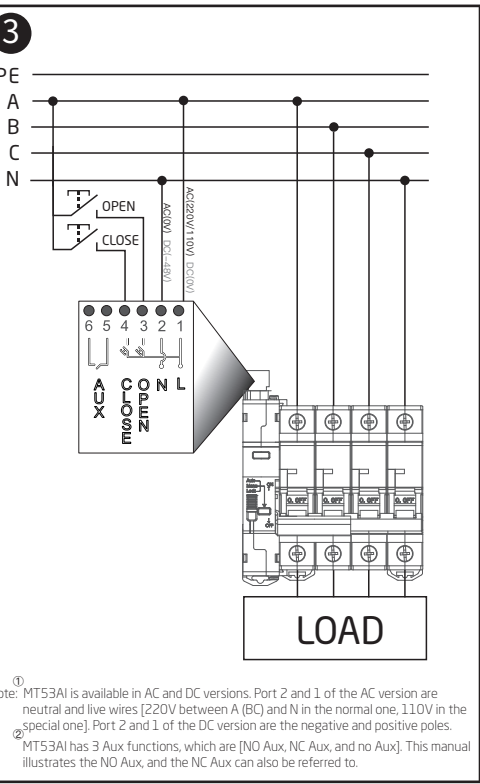
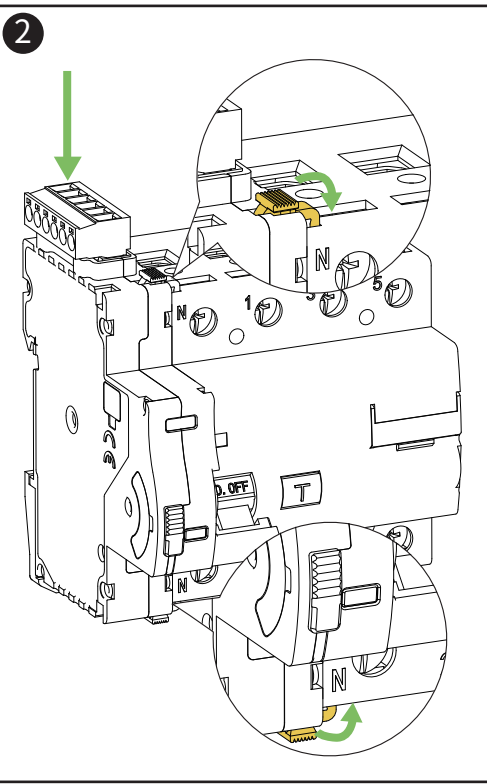
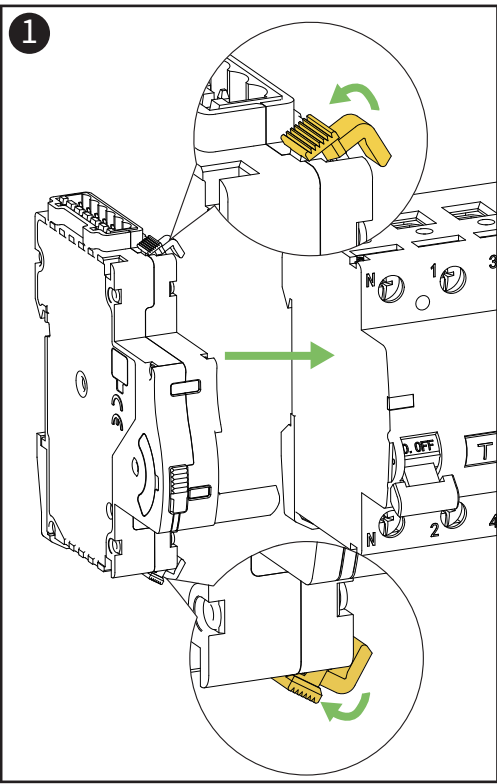
Note: ■ □ Δ in the above table are all explained in the MT53 IO remote control/auto-reclosing model description. Please see the model description for details.

Product Model Description

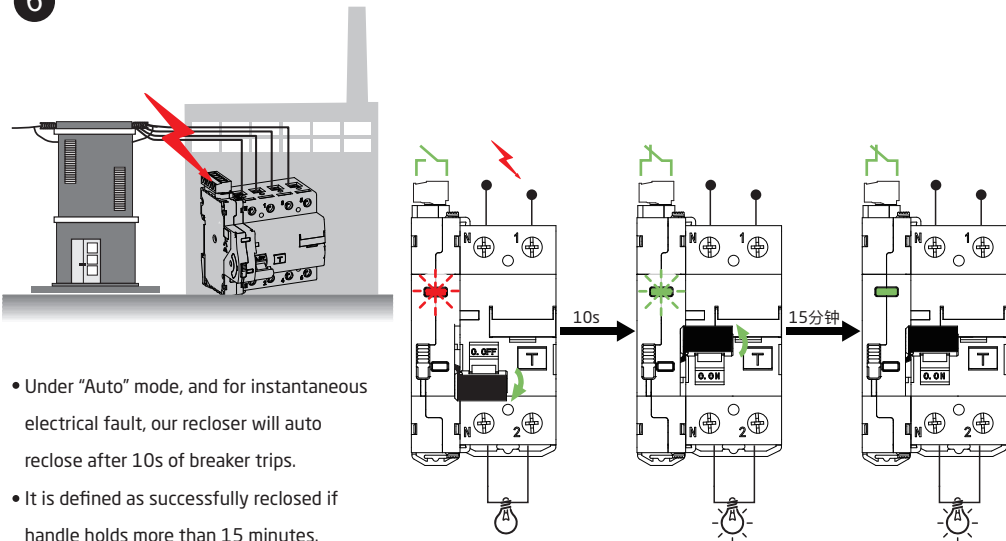
For example: MT53AIW10-1N

- M → Company
- T → Control, automatic reclosing device
- 53 → Design serial number
- A → A: Auto Reclose R: Remote control
- I → IO control
- 10 → 01: NC Aux
01: NO Aux
None: No Aux
- N → W: Matis 50 series
J: Matis 60 series
H: Matis 22 series
K: Matis 90 series
N: Schneider Acti 9 series MCB/RCCB
I: Schneider Acti 9 Series RCD iLD
L: Nader NDB2 MCB/RCCB
Z: Chint NB1 MCB
C: Chint NL1 RCCB
- 1 → 1: 18mm handle only to 1P circuit breaker
2: 18mm handle only to 2P circuit breaker
1: 18mm handle to 1P/2P circuit breaker
2: 36mm handle to 3P/4P circuit breaker
- N → N: AC220V

Electrical Characteristics		The Width of DIN Module		1		Wiring Capability		≤2.5mm ²	
Standard	EN 60947-5-1	Reclosing Time Interval		10s - 60s - 300s		Rated Tightening Torque		0.4Nm	
Power Distribution System	TN-S / TN-C-S / TT	Max Operation Frequency		30open./h		Min Rated Voltage(Min Ue)			
Rated Voltage(Ue)	230V AC (1)	Electrical Life		10000		Auto Reclose When Electric Fault Trip		●	
Min Rated Voltage(Min Ue)	85% Ue	Max. Auto Reclose Cycle		3		Earthleakage Test		●	
Max Rated Voltage(Max Ue)	110% Ue	Reclosed Counting Reset Time		60s		Reclose Stops when Fault		●	
Rated Insulation Voltage(Ui)	500V	Protection Grade		IP20 (Outside Panel) IP40 (Inside Panel)		Signal of Reclosing		●	
Diaelectric Strength	2500V AC for 1 minute					Fault Signal Indicator		●	
Rated Withstand Voltage(Uimp)	4kV	Terminal Part of Breaker		Soft Cable: ≤ 1x16mm ² Hard Cable: ≤ 1x25mm ²		Function of Auto / Manual		●	
Over-voltage Category	III					<div> Warranty All users who purchase the product enjoy a 24-month warranty period from the date of purchase. During the warranty period, if there is a quality problem which affects normal use, you can enjoy free repair and replacement. In case of irreversible damage caused by improper use, drop, installation and wiring errors, it can be repaired or replaced at a fee within the warranty period. If you disassemble and modify it by yourself, you will not enjoy the warranty service.</div>			
Rated Frequency	50/60Hz	Enviroment Characteristics							
Static Power	1VA	Pollution Grade		2					
Power of Remote Operation	20VA	Work Temperature		-25°C +60°C					
Breaking Capacity of Earthleakage (IΔm)	The IΔm of Related Breaker	Storage Temperature		-40°C +70°C					
		Relative Humidity		25°C / RH 95%					
Rated Residual Short Circuit Current (IΔc)	The IΔc of Related Breaker	Auxiliary Contact Characteristics							
Handle Length	1 / 2	Contact		yes					
MCB Type	1P / 2P / 3P / 4P	Contact Type		Electronic Relay					
RCCB Type	AC / A / B	Rated Voltage		5V-230V AC/DC					
Rated Current(In)	The In of Related Breaker	Rated Current		0.01A (min) -0.4 (max)					
Rated Residual Current(IΔn)	The IΔn of Related Breaker	Frequency		50Hz					
AUX Input	0.4A(max)	Use Category		AC12					
Mechanical Characteristics		Operation Mode		NO\NC\COM Signal of Handle Position					



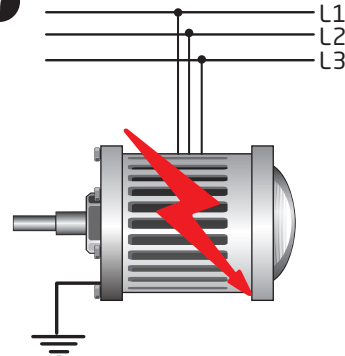
6



- Under "Auto" mode, and for instantaneous electrical fault, our recloser will auto reclose after 10s of breaker trips.
- It is defined as successfully reclosed if handle holds more than 15 minutes. After successfully reclosed, previous reclose counting will be cleared and renewed.

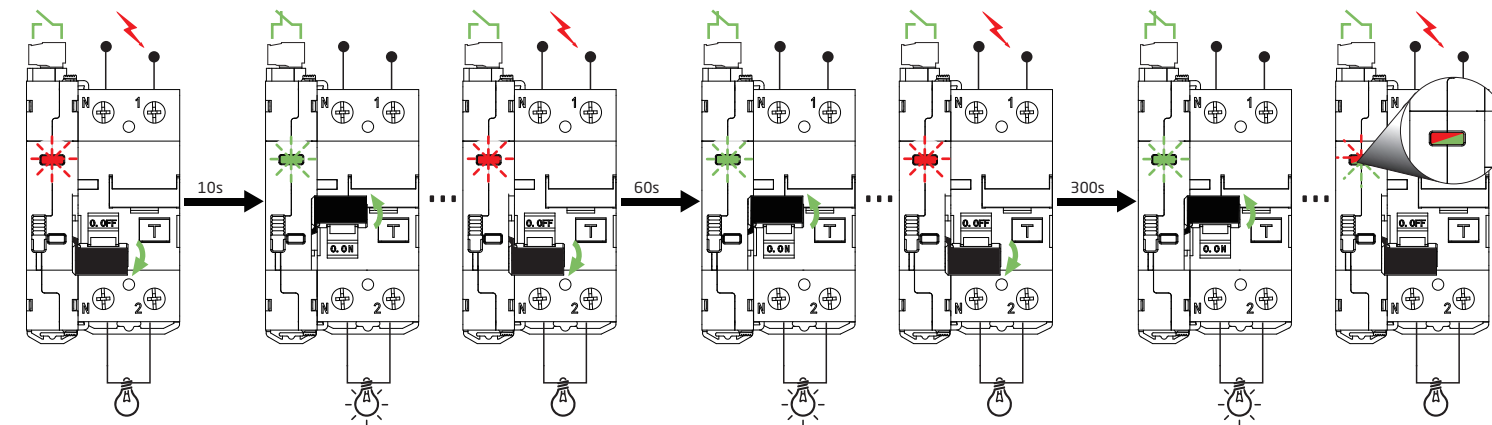
Note: MT53AI series has automatic reclosing function, MT53RI series does not have automatic reclosing function.

7



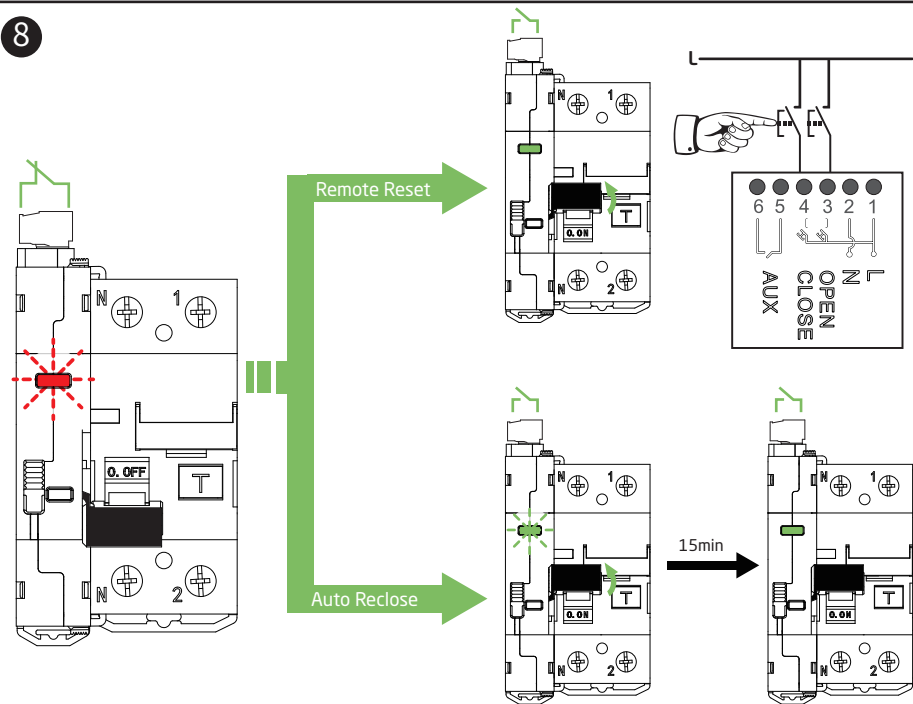
- Under "Auto" mode, and for continuous electrical fault,
- It will auto reclose after 10s time delay, and failed;
- It will auto reclose again after 60s time delay, and failed;
- It will auto reclose again after 300s time delay, and failed;
- It will switch to "Lock" status, and no more auto reclose (Meanwhile, the terminal of remote On/Off functions)

Working Status Indicator	
Closed	Green On
Open under Manual/Open under Auto	Red on
Reclosing after Fault Opening	Red Flashing
Stabilizing after Auto Reclosing	Green Flashing
Reclosing Failed after Three Automatic Reclosing	Red/Green Flashing Alternately
Adjust to Manual Mode	Red On

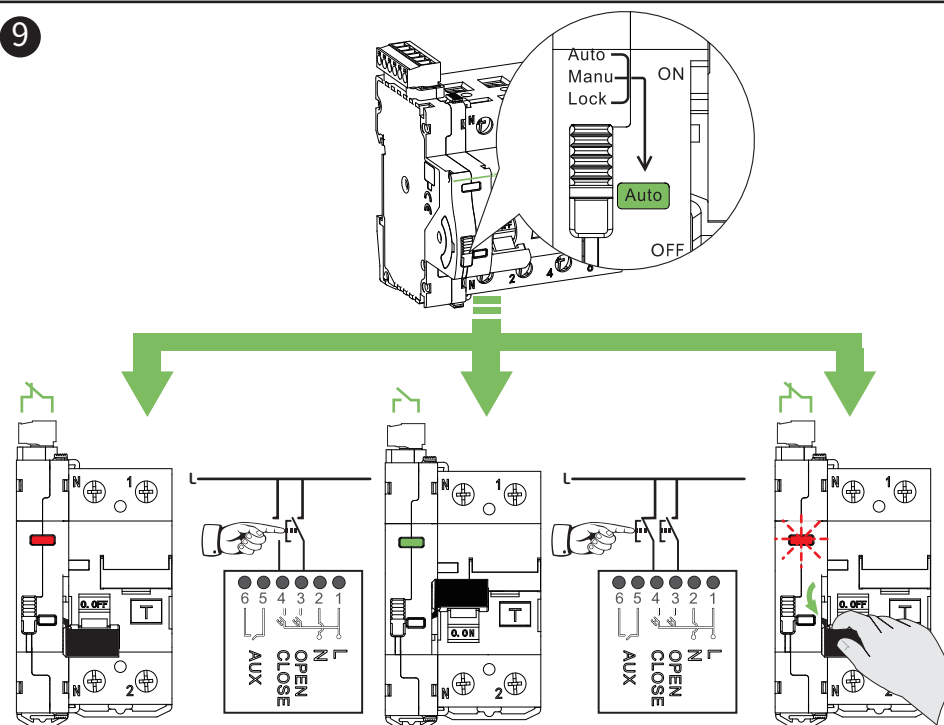


Note: MT53AI series has automatic reclosing function, MT53RI series does not have automatic reclosing function.

8

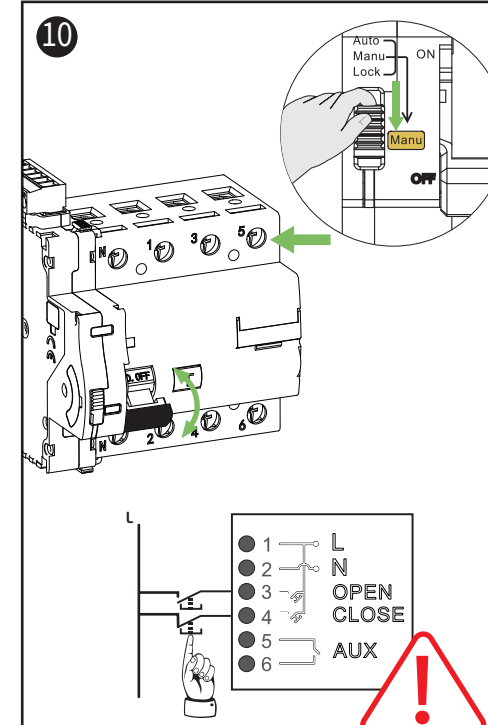


9

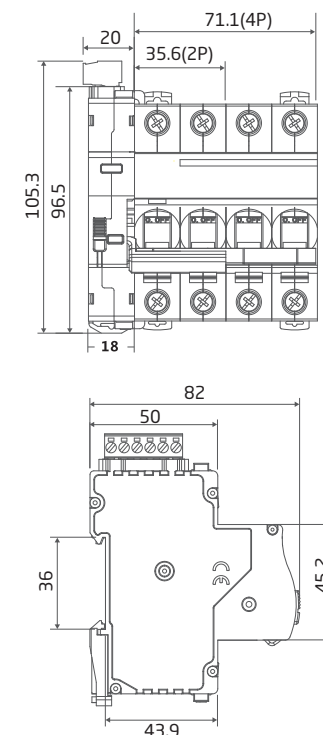


Note: It will enter reclose status when recloser is ON position and manually switched off.

10

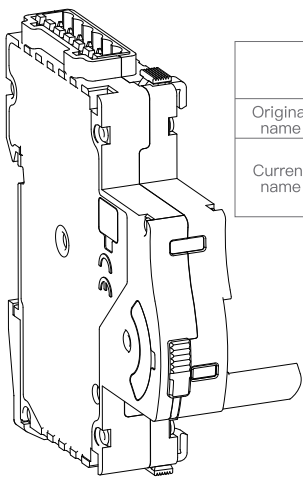


Note: The dry contact is disabled when "Manu" mode.



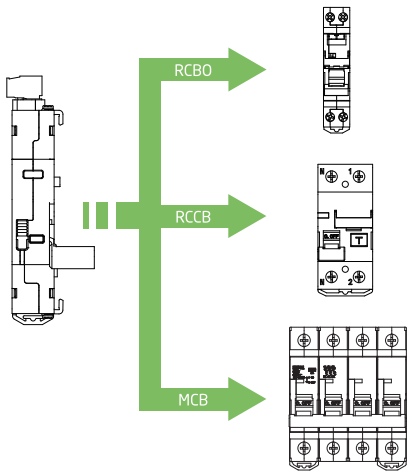
MT53 RS485

Remote Control/Auto-reclosing Series Product Manual



	Auto-re-closing Series	Remote Control Series
Original name	MT53AS	MT53RS
Current name	MT53RAs	MT53Rs
	MT53RAsx	MT53Rsx

Shanghai Matis Electric Co.Ltd
Web:www.matismart.com
Tel:+86 21 6050 3668,+86 18621879631
Add: Room 318-320, No.83,West Huanhu Road, Pudong, Shanghai, China 201306



Suitable circuit breakers for
MT53 RS485 remote control/auto-reclosing devices:

CB		MCB			RCD		RCBO				
Style	Poles	1P	2P	3P/4P	2P	4P	1P	2P	3P	3P+N	4P
MT53A(R)S■10□-1△		✓	✓		✓		✓	✓			
MT53A(R)S■10□-11△		✓					✓				
MT53A(R)S■10□-12△			✓					✓			
MT53A(R)S■10□-2△				✓						✓	✓

Note: ■ □ △ in the above table are all explained in the MT53 RS485 remote control/auto-reclosing model description. Please see the model description for details.

Product Model Description

For example:MT53ASw10-1N

M

Company

T

Control, automatic reclosing device

53

Design serial number

A

A:Auto Reclose R:Remote control

S

RS485 control

10

01: NC Aux
01: NO Aux
None: No Aux

N

W:Matis 50 series
J:Matis 60 series
H:Matis 22 series
K:Matis 90 series
N:Schneider Acti 9 series MCB/RCBO
I :Schneider Acti 9 Series RCD iID
L:Nader NDB2 MCB/RCCB
Z:Chint NB1 MCB
C:Chint NL1 RCCB

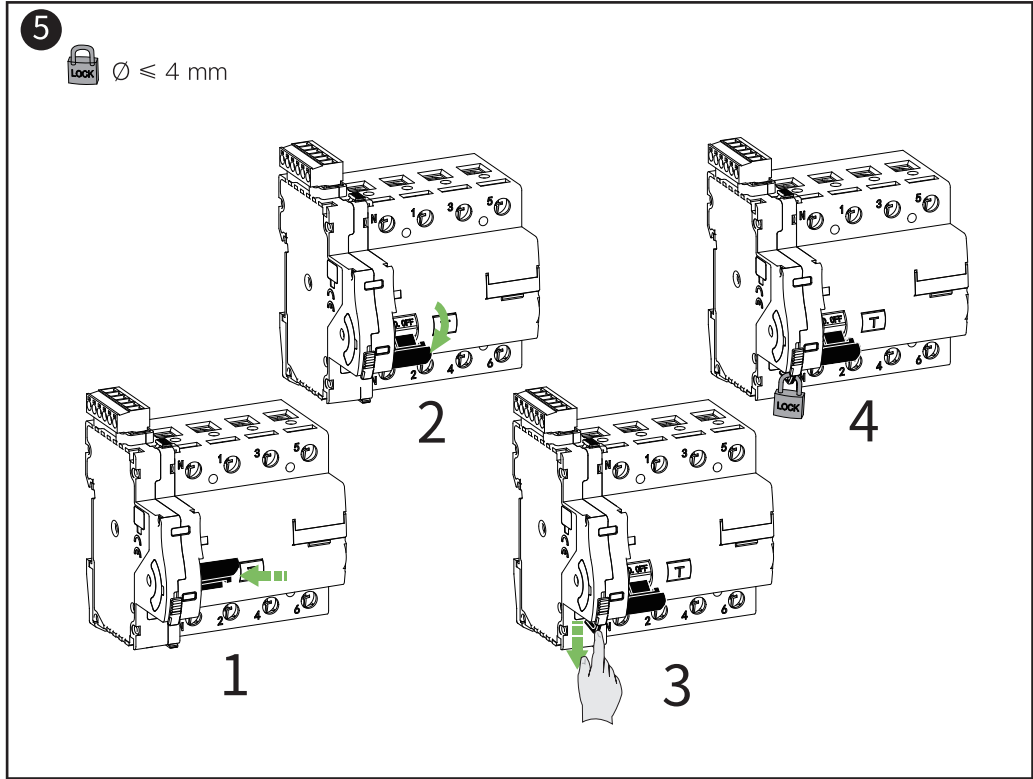
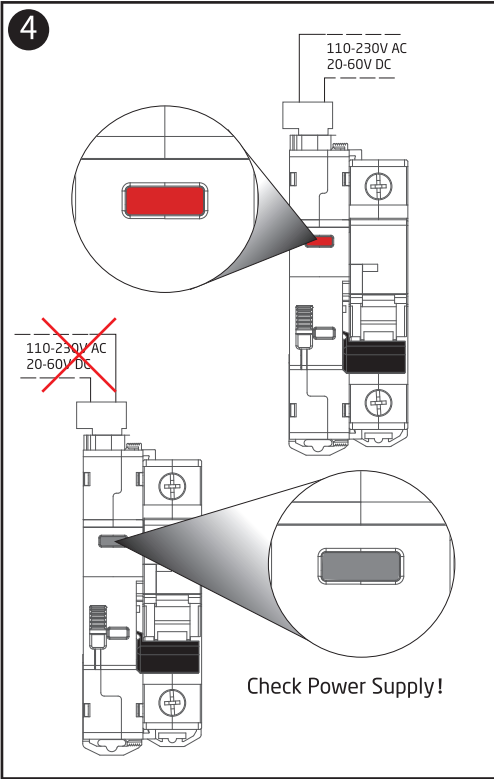
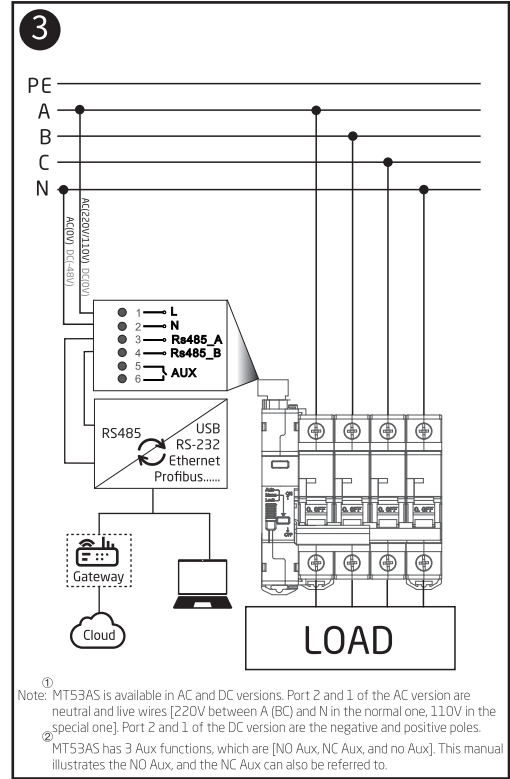
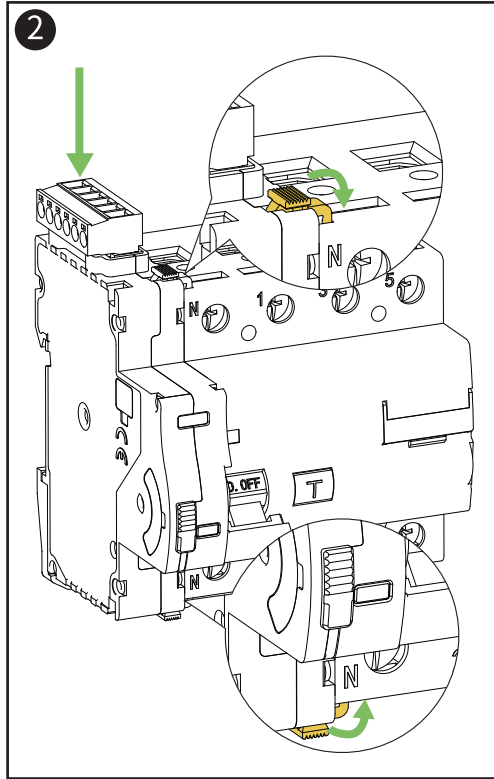
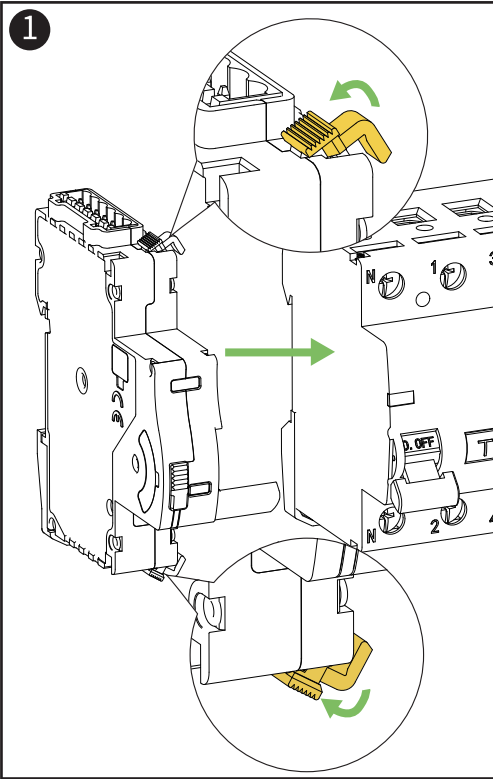
1

11 :18mm handle only to 1P circuit breaker
12:18mm handle only to 2P circuit breaker
1 :18mm handle to 1P/2P circuit breaker
2 :36mm handle to 3P/4P circuit breaker

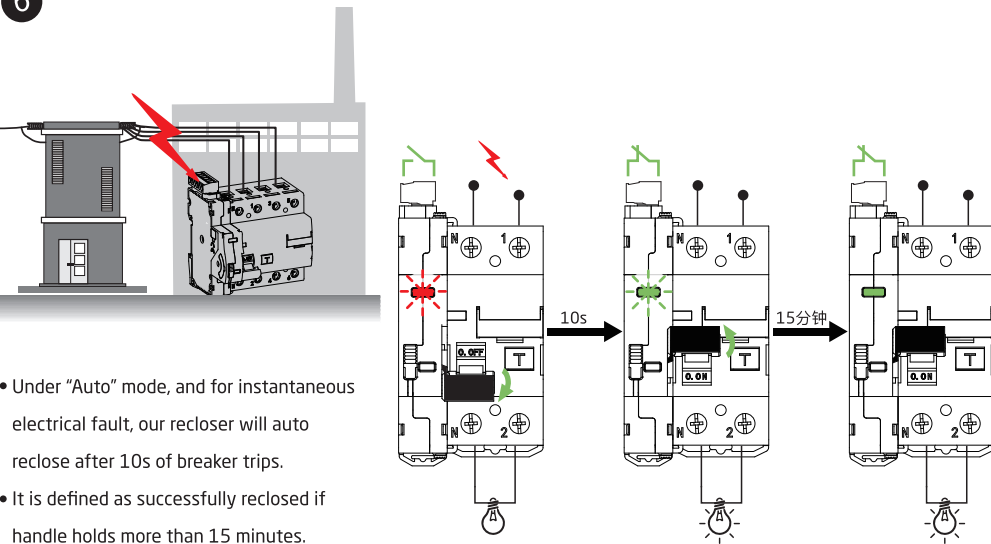
N

N:AC220V

Electrical Characteristics		The Width of DIN Module	1	Contact Type	Electronic Relay
Standard	YDT2346-2011	Reclosing Time Interval	10s - 60s - 300s	Rated Voltage	5V-230V AC/DC
Power Distribution System	TN - S	Max Operation Frequency	30open./h	Rated Current	0.01A (min) -0.4 (max)
Rated Voltage(Ue)	AC~220V(110V) DC~48V	Electrical Life	10000	Frequency	50/60Hz
Min Rated Voltage(Min Ue)	85% Ue	Max. Auto Reclose Cycle	3	Use Category	AC12
Max Rated Voltage(Max Ue)	110% Ue	Reclosed Counting Reset Time	60s	Operation Mode	NO\NC\ as a signal of ON/OFF
Rated Insulation Voltage(Ui)	500V			Wiring Capability	≤2.5mm2
Diaelectric Strength	2500V AC for 1 minute	Protection Grade	IP20 (Outside Panel) IP40 (Inside Panel)	Rated Tightening Torque	0.4Nm
Rated Withstand Voltage(Uimp)	4kV			Min Rated Voltage(Min Ue)	
Over-voltage Category	III	Terminal Part of Breaker	Soft Cable: ≤ 1x16mm2 Hard Cable: ≤ 1x25mm2	Auto Reclose When Electric Fault Trip	●
Rated Frequency	50/60Hz				
Static Power	1VA	Enviroment Characteristics		Earthleakage Test	●
Power of Remote Operation	20VA	Pollution Grade	2	Reclose Stops when Fault	●
Breaking Capacity of Earthleakage (IΔm)	The IΔm of Related Breaker	Work Temperature	-25℃ +60℃	Signal of Reclosing	●
		Storage Temperature	-40℃ +70℃	Fault Signal Indicator	●
Rated Residual Short Circuit Current (IΔc)	The IΔc of Related Breaker	Relative Humidity	55℃ - RH 95%	Function of Auto / Manual	●
		Communication Parameter		Internal Electrical Protection	PTC
Handle Length	1 - 2	Baudrate	Default as 9600, Configurable	<div><div></div><div><div>Warranty</div><div>All users who purchase the product enjoy a 24-month warranty period from the date of purchase. During the warranty period, if there is a quality problem which affects normal use, you can enjoy free repair and replacement. In case of irreversible damage caused by improper use, drop, installation and wiring errors, it can be repaired or replaced at a fee within the warranty period. If you disassemble and modify it by yourself, you will not enjoy the warranty service.</div></div></div>	
MCB Type	1P - 2P - 3P - 4P	Check Digit	No Check digit		
RCCB Type	AC - A - A[IR] - A[S]	Data Digit	8		
Rated Current(In)	The In of Related Breaker	Stop Digit	1		
Rated Residual Current(IΔn)	The IΔn of Related Breaker	Device Address	Factory Default Address: 1		
AUX Input	0.4A(max)	Auxiliary Contact Characteristics			
Mechanical Characteristics		Contact	yes		

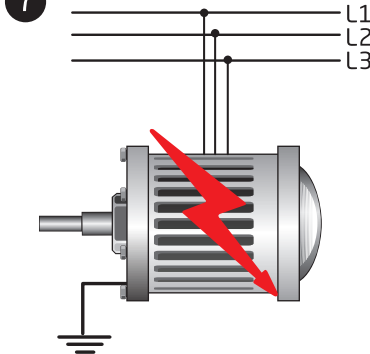


6



Note: MT53AS series has automatic reclosing function, MT53FS series does not have automatic reclosing function.

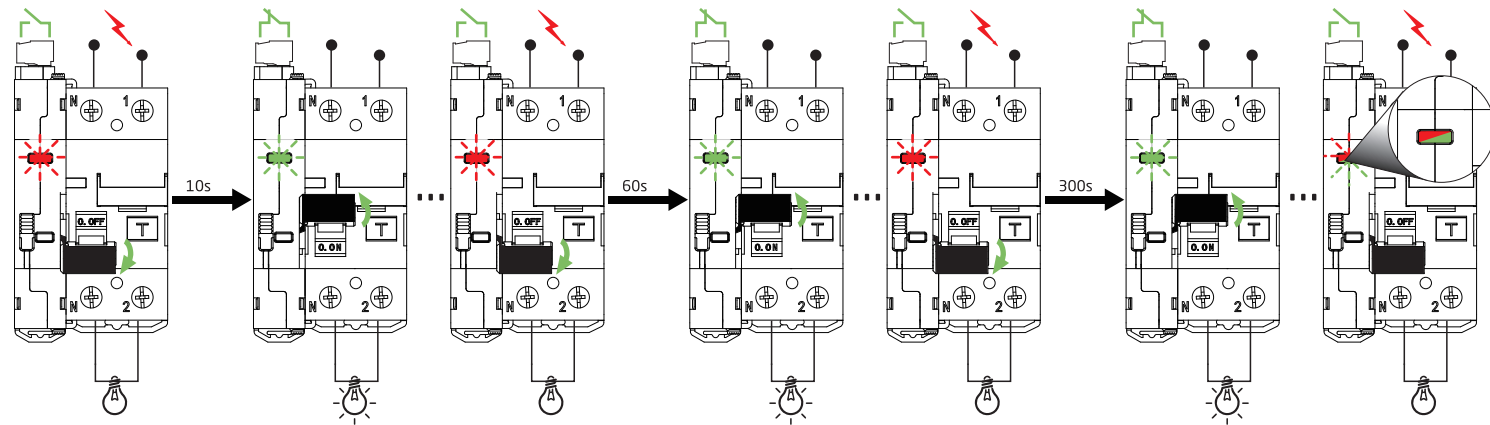
7



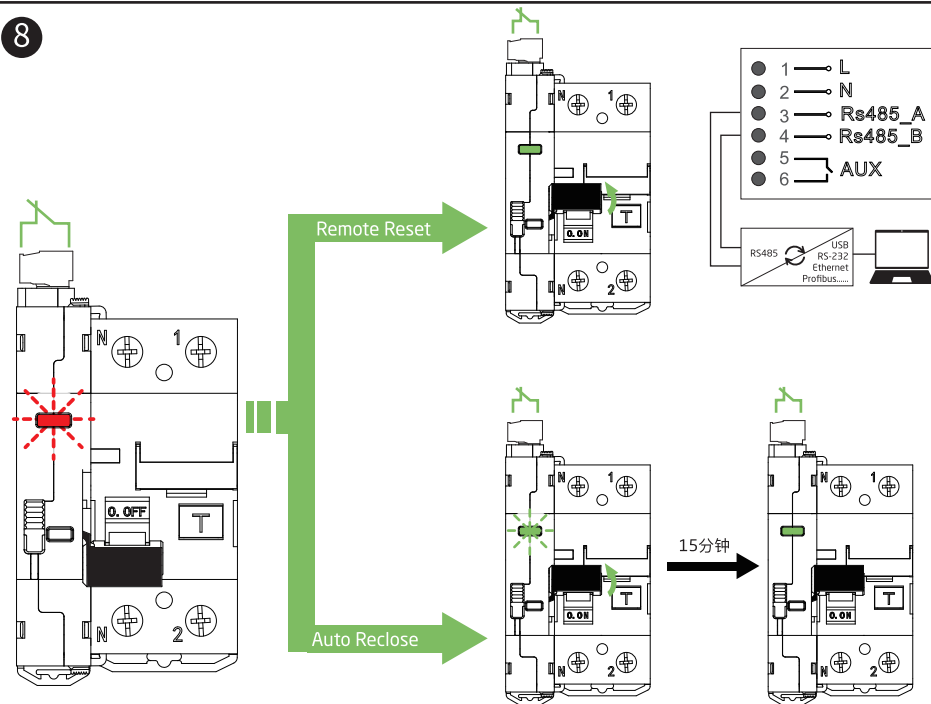
- Under "Auto" mode, and for continuous electrical fault,
- It will auto reclose after 10s time delay, and failed;
- It will auto reclose again after 60s time delay, and failed;
- It will auto reclose again after 300s time delay, and failed;
- It will switch to "Lock" status, and no more auto reclose (Meanwhile, the terminal of remote On/Off functions)

Note: MT53AS series has automatic reclosing function, MT53FS series does not have automatic reclosing function.

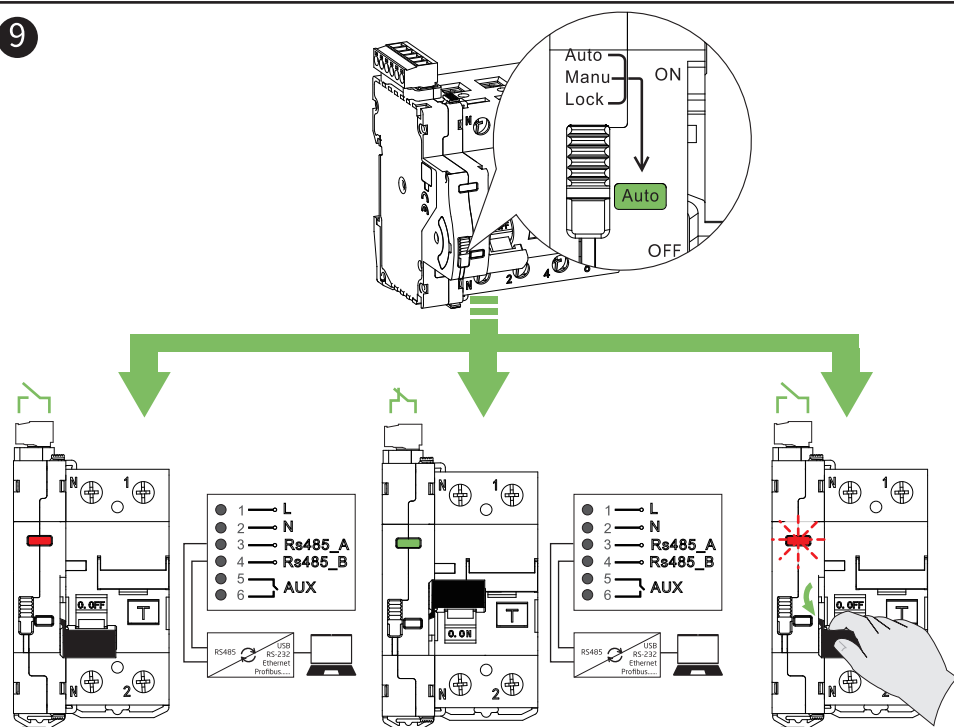
Working Status Indicator	
Closed	Green On
Open under Manual/Open under Auto	Red on
Reclosing after Fault Opening	Red Flashing
Stabilizing after Auto Reclosing	Green Flashing
Reclosing Failed after Three Automatic Reclosing	Red/Green Flashing Alternately
Adjust to Manual Mode	Red On



8

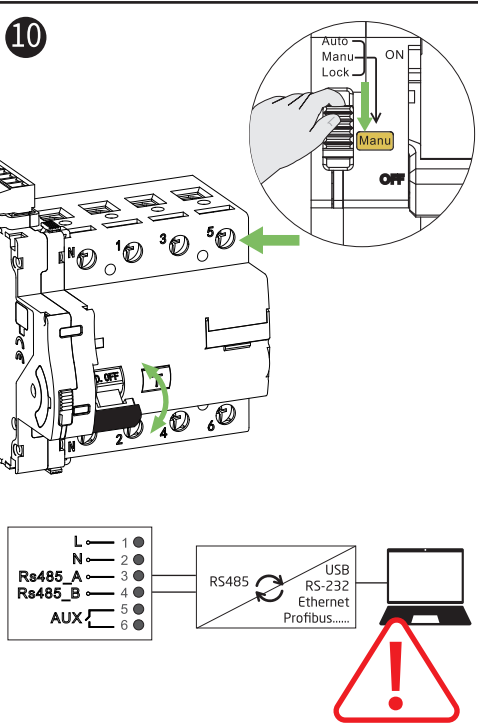


9

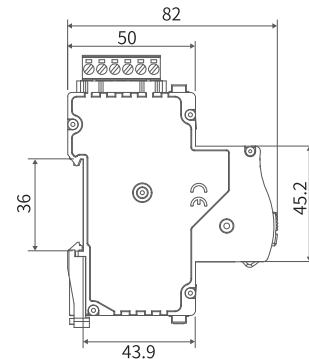
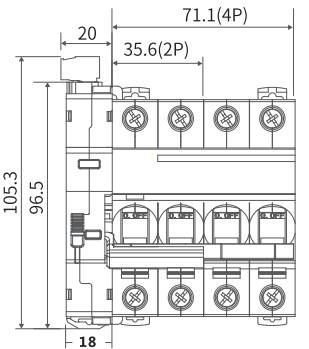


Note: It will enter reclose status when recloser is ON position and manually switched off.

10



Note: The dry contact is disabled when "Manu" mode.

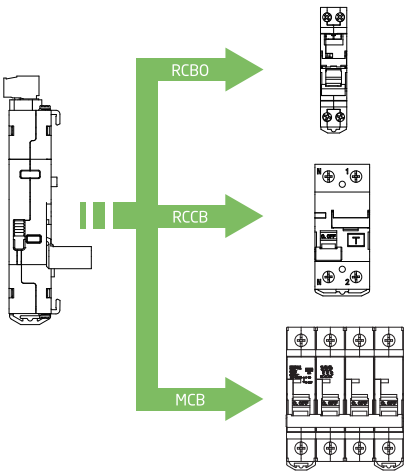


MT53 Wifi

Remote Control/Auto-reclosing Series Product Manual



- R** Remote Control
- A** Auto Reclose
- W** Tuya App WiFi Control



Suitable circuit breakers for MT53 WiFi remote control/automatic reclosing devices:

CB Style	Poles	MCB				RCD				RCBO			
		1P	2p	3P/4P	2P	4P	1P	2P	3P	3P+N	4P		
MT53A(R)W	10□-1△	✓	✓		✓	✓	✓	✓					
MT53A(R)W	10□-11△	✓						✓					
MT53A(R)W	10□-12△		✓						✓				
MT53A(R)W	10□-2△			✓						✓	✓	✓	✓

Note: ■ □ △ in the above table are all explained in the MT53 WiFi remote control/automatic reclosing model description. Please see the model description for details.

Product Model Description

For example:MT53AWN-1N

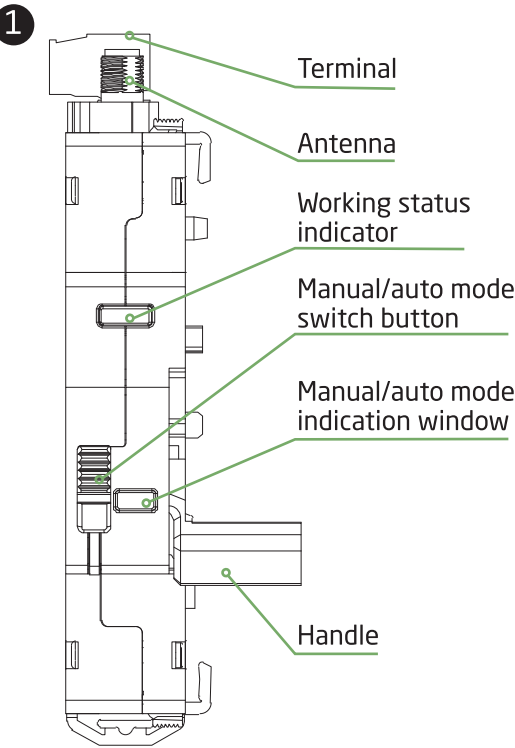
- M** → Company
- T** → Control, automatic reclosing device
- 53** → Design serial number
- A** → A:Auto Reclose R:Remote control
- W** → WiFi control
- N** → W:Matis 50 series
J:Matis 60 series
H:Matis 22 series
K:Matis 90 series
N:Schneider Acti 9 series MCB/RCBO
I :Schneider Acti 9 Series RCD iLD
L :Nader NDB2 MCB/RCCB
Z:Chint NB1 MCB
C:Chint NL1 RCCB
- 1** → 11 :18mm handle only to 1P circuit breaker
12 :18mm handle only to 2P circuit breaker
1 :18mm handle to 1P/2P circuit breaker
2 :36mm handle to 3P/4P circuit breaker
- N** → N:AC220V

Electrical Characteristics

Standard	YDT 2346-2011 communication auto-reclosing residual current protector technology
Power Distribution System	TN - S
Rated Voltage (Ue)	AC~220V
Minimum Voltage (minimum UE)	85% Ue
Maximum Voltage (maximum UE)	110% Ue
Rated Insulation Voltage (Ui)	500V
Inter-polar Dielectric Strength Test Voltage	2500V AC for 1 minute
Rated Impulse Withstand Voltage (Uimp)	4kV
Overvoltage Type	III
Rated Frequency	50Hz
Static Power	1VA
Remote Control Time Power	20VA
Leakage Making/Breaking Capability (IΔm)	IΔm of related circuit breakers
Rated Condition Residual Short Circuit Current (IΔc)	IΔc of related circuit breakers
Length of Handle	1 - 2

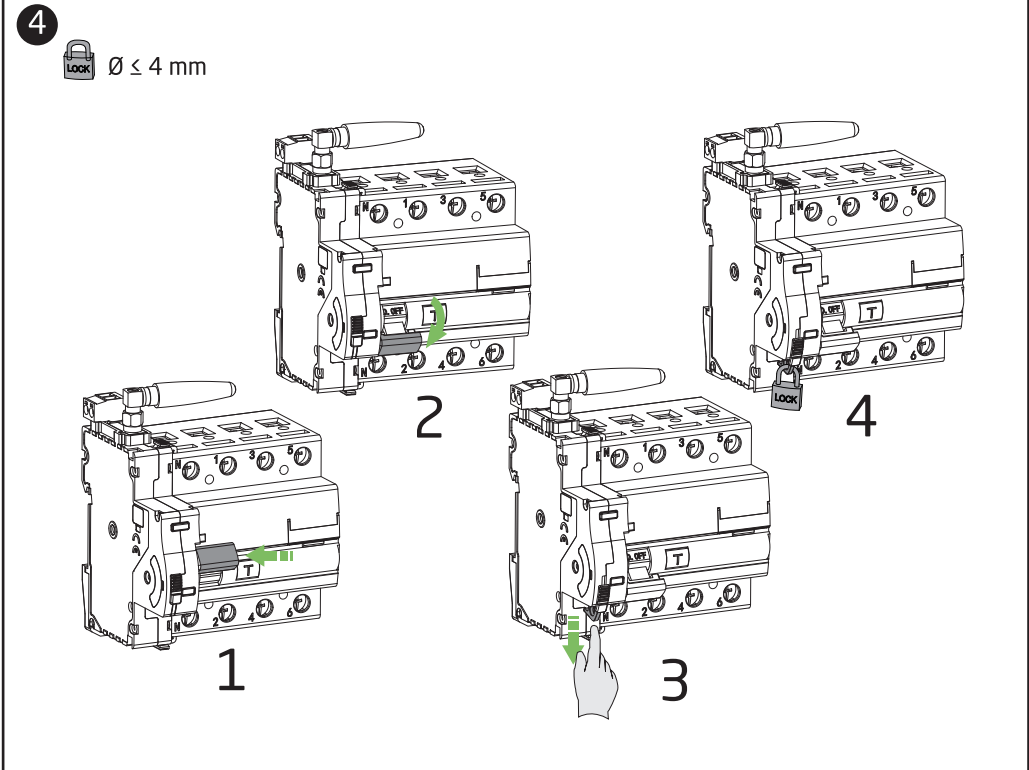
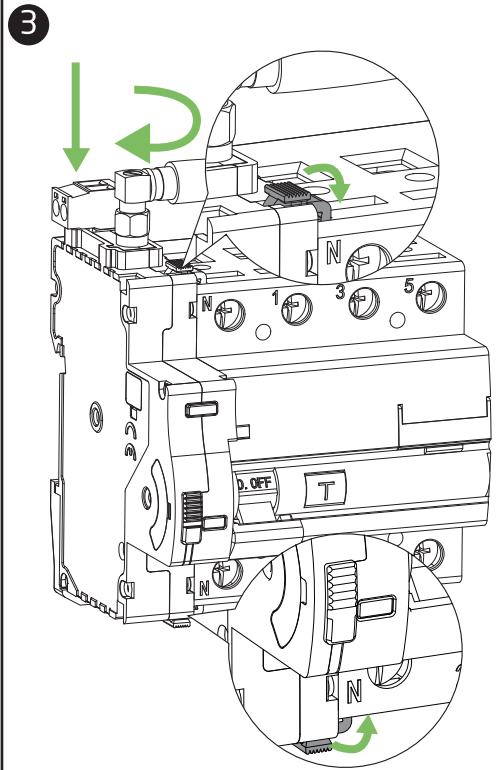
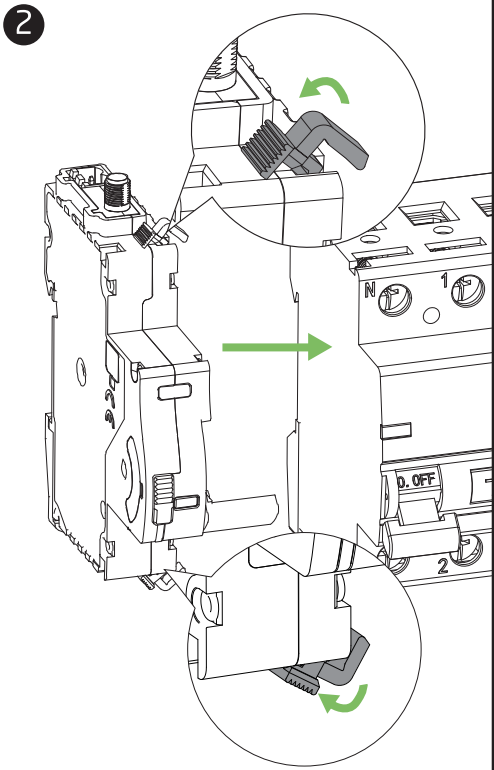
MCB Type	1P - 2P - 3P - 4P
RCCB Type	AC - A - A[IR] - A[S]
Rated Current (In)	In of related circuit breakers
Rated Residual Operated current (IΔn)	IΔn of related circuit breakers
Mechanical Characteristics	
Width in the DIN Module	1
Maximum Operating Frequency	30open/h
Maximum Mechanical Durability (Total Number of Operations)	10000
Protection Grade	IP20 (outside the cabinet) - IP40 (inside the cabinet)
Circuit Breaker Terminal Section	Soft wire: ≤ 1x16mm ² Hard wire: ≤ 1x25mm ²
Environmental Characteristics	
Pollution Levels	2
Operating Temperature	-25°C +60°C
Storage Temperature	-40°C +70°C
Relative Humidity	55°C - RH 95%

Working Voltage	5V-230V AC/DC
Working Current	0.6A (min) -1 (max)
Working Frequency	50Hz
Use Category	5V-230V AC/DC
Operating Mode	0.6A (min) -1 (max)
Wiring Capability	50Hz
Rated Tightening Torque	AC12
Communication Parameters	
Baud Rate	9600 by default (can be set)
Check Bit	No check
Data Bit	8
Stop Bit	1
Device Address	Factory default address: 1
Warranty Anyone who purchases this model of device enjoys a 24-month warranty period from the date of purchase. During the warranty period, if the quality of the device itself affects the normal use, you can enjoy free repair and replacement, and the condition of paid service as follows: the improper use, drop, installation and wiring errors that cause irreversible damage. Besides, if you disassemble and modify the device yourself, you will not enjoy the warranty service.	

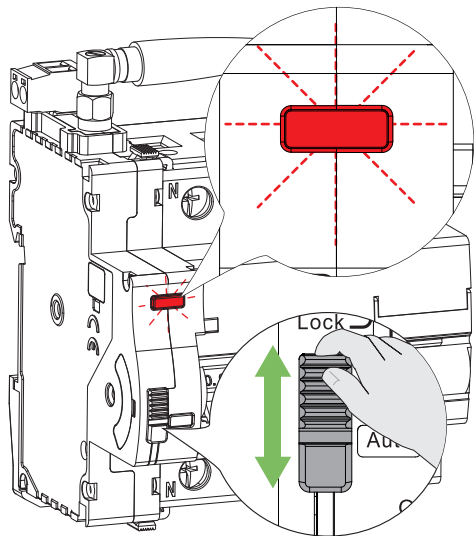


Working Status Indicator

Green Light On	Close
Green Light Flash Slowly	WLAN transmits data normally (in WiFi distribution mode)
Red Light on	Open
Red Light Flash Slowly	Abnormal WLAN connection (in WiFi distribution mode)



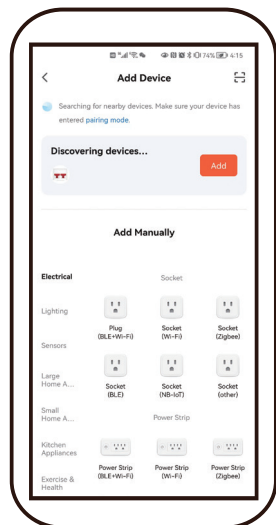
5



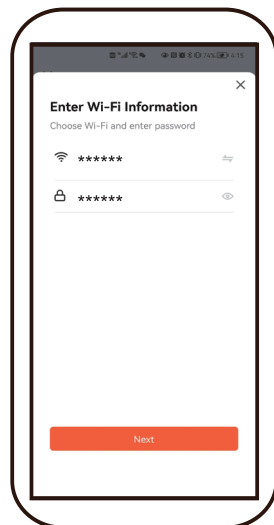
1. Switch the button from auto to manual then back to auto again, repeat the operation 2 times, the red light flashes and enter the distribution network mode.



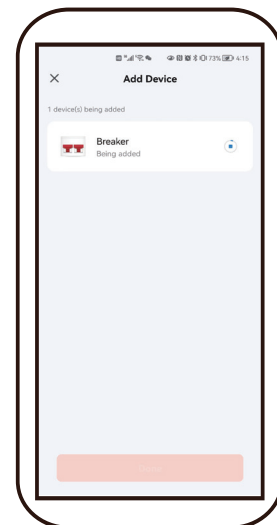
2. Open the Tuya WiFi APP.



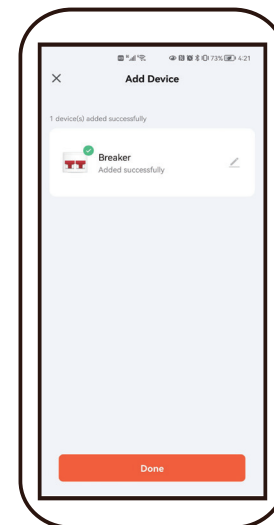
3. Click the Add button to add a device.



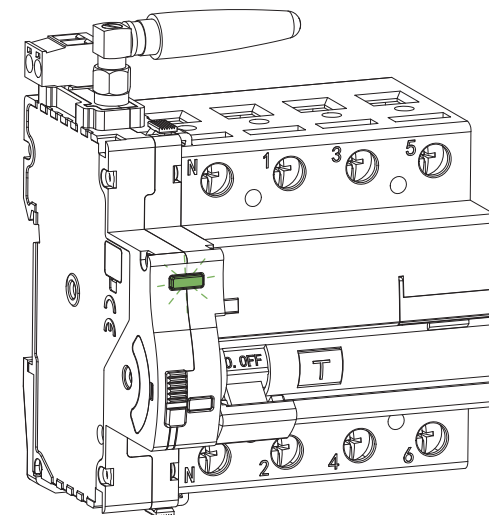
4. Enter WIFI information.



5. Wait for the device to be added.

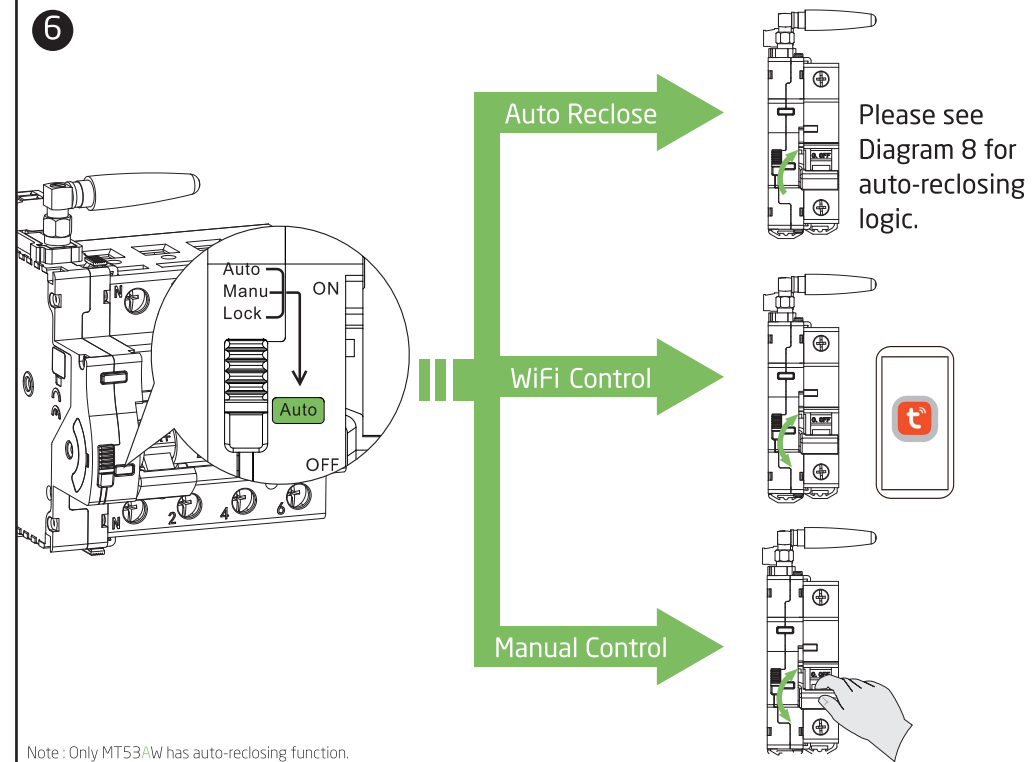


6. Add device successfully.

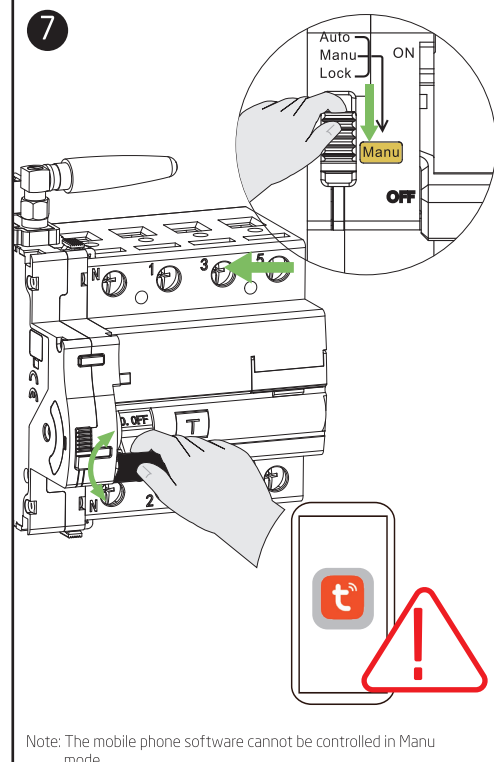


7. The green light flashes and the connection is successful. The device can be controlled by Tuya APP WiFi.

6



7



8

